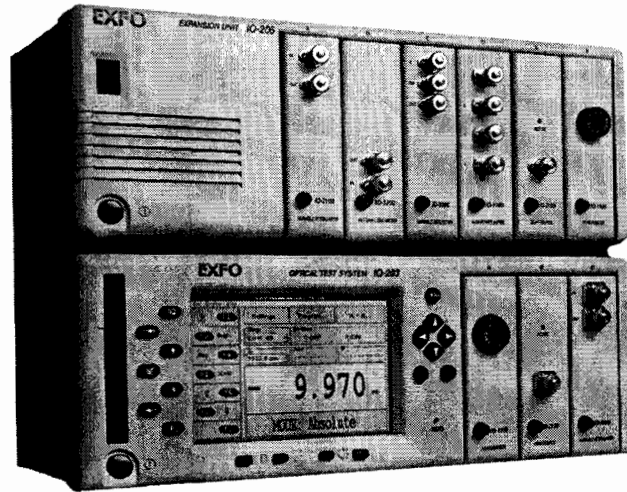


IQ-200



Optical Test System



Instruction Manual

Seventh Edition

P/N: MAN-056-I .7ACE

*If the equipment described herein bears the **CE** symbol, the said equipment complies with the European Community Directive and Standards found in the Declaration of Conformity.*

If the equipment described herein bears an FCC statement, the said equipment complies with the relevant Federal Communications Commission standards.

All rights reserved. No part of this publication may be reproduced, stored in a retrieval system, or transmitted in any form or by any means, be it electronic, mechanical, photocopying, recording, or otherwise, without the prior written permission of EXFO Electro-Optical Engineering Inc. (EXFO).

Information provided by EXFO is believed to be accurate and reliable. However, no responsibility is assumed by EXFO for its use nor for any infringements of patents or other rights of third parties that may result from its use. No license is granted by implication or otherwise under any patent rights of EXFO.

EXFO's Commerce And Government Entities (CAGE) code under the North Atlantic Treaty Organization (NATO) is 0L8C3.

The information contained in this manual is subject to change without notice.

© 2001 EXFO Electro-Optical Engineering Inc.

Words which we consider as trademarks have been identified as such. However, neither the presence nor absence of such identification affects the legal status of any trademark.

March 2001

Contents

Certification Information.....	v
1 IQ-200 Optical Test System Overview	1
IQ-203 Control Unit.....	1
IQ-206 Expansion Unit	4
IQ-206 Expansion Card.....	6
Remote Control of the IQ-200 Optical Test System	8
2 Safety Information	9
Safety Conventions.....	9
Safety Precautions.....	9
Electrostatic Discharge Precautions	10
AC and Power Cable Requirements	11
3 Installing and Connecting the IQ-200 Hardware	13
Setting Up the IQ-200 for Rack-Mount Use.....	14
Connecting IQ-206 Expansion Units to an IQ-203 Control Unit.....	17
Installing the IQ-206 Expansion Card	19
Connecting IQ-206 Expansion Units to an IQ-206 Expansion Card	25
4 Installing and Configuring the IQ-200 Software	27
Installing the IQ-200 Software	27
Configuring the IQ-200 Drivers	31
Uninstalling the IQ-200 Software	33
5 Using the IQ-200 Optical Test System	35
Getting Started with the IQ-203 Control Unit	35
Getting Started with the Expansion Card	37
Inserting Modules in the IQ-203 or IQ-206.....	39
Removing Modules from the IQ-203 or IQ-206	40
Understanding the IQ-200 Software	41
Customizing the IQ-200 Optical Test System	45
Starting and Using Module Applications	52
Displaying the Module Monitor Window	54
Controlling the IQ-200 Remotely.....	56
Exploring Drive Contents and Running External Software	56
Getting Help in the IQ-200 Software.....	57
Powering the IQ-200 Optical Test System Off	58

Contents

6	Maintenance and Troubleshooting	59
	Cleaning the IQ-203 Control Unit and IQ-206 Expansion Unit.....	59
	Replacing the Fuses	60
	Defragmenting Drives and Files.....	61
	Scanning Hard Disks for Errors	61
	Troubleshooting the IQ-203 Control Unit and IQ-206 Expansion Unit.....	62
	Troubleshooting the IQ-206 Expansion Card	63
	Transportation and Storage.....	64
	Contacting the Customer Service Group	64
7	Technical Specifications	65
	Electrical Specifications	65
	Mechanical Specifications	65
	Environmental Specifications	66
8	Warranty	67
	General Information.....	67
	Liability.....	68
	Exclusions.....	68
	Certification	68
	Service and Repairs	68
A	IQ Modules and Typical Applications	71
	List of IQ Modules	71
	Typical Applications for IQ Modules	72
B	Using the IQ-9600 Utility Module	75
	Exploded View of Single-Slot Utility Module	76
	Exploded View of Double-Slot Utility Module	77
C	Accessing a Remote CD-ROM Drive with the IQ-203	79
	Sharing the CD-ROM Drive from the PC	79
	Accessing the Remote CD-ROM from the IQ-203 Through a Network.....	80
	Accessing the Remote CD-ROM from a PC Connected Directly to the IQ-203.....	81
	Troubleshooting Direct Cable Connection	85
	Index	87

Certification Information

F.C.C. INFORMATION TO USER

This product has been tested and found to comply with the limits for a Class B digital device, pursuant to Part 15 (Subpart B) of the FCC Rules. These limits are designed to provide reasonable protection against harmful interference in a residential installation. This unit generates, uses, and can radiate radio frequency energy and, if not installed and used in accordance with the instruction manual, may cause harmful interference to radio communications. However, there is no guarantee that interference will not occur in a particular installation. If this unit does cause harmful interference to radio or television reception, which can be determined by turning the unit off and on, the user is encouraged to try to correct the interference by one or more of the following measures:

- Reorient or relocate the receiving antenna.
- Increase the separation between the unit and receiver.
- Connect the unit into an outlet on a circuit different from that to which the receiver is connected.
- Consult the dealer or an experienced radio/TV technician for help.

WARNING

Changes or modifications not expressly approved by EXFO Electro-Optical Engineering Inc. could void the user's authority to operate the unit.

Certification Information

- This unit is equipped with a shielded three-wire power cord and plug. Use this power cord in conjunction with a properly grounded electrical outlet to avoid electrical shock and to reduce radio frequency interference that may emanate from the power cord.
- Use of shielded remote I/O cables, with properly grounded shields and metal connectors, is recommended in order to reduce radio frequency interference that may emanate from these cables.
- When the GPIB option is present, this unit is equipped with a shielded GPIB cable.

INDEPENDENT LABORATORY TESTING

This product has undergone extensive **CE** certification testing both internally, at EXFO, and externally, at an independent, qualified laboratory. All pre-qualification tests were performed at EXFO while all final tests were performed at UltraTech Engineering Labs Inc., a renowned test laboratory from Mississauga, Canada. This guarantees the unerring objectivity and authoritative compliance of all test results.

CE INFORMATION TO USER

This product has been tested and found to comply with the limits for a Class B digital device. Please see the Declaration of Conformity.

1 ***IQ-200 Optical Test System Overview***

The IQ-200 product line is a modular optical test system designed for laboratory application. Thanks to the Windows compatible IQ-200 Software, the IQ-200 Optical Test System combines power, performance, and flexibility with a user-friendly interface. The main components of the system are the IQ-203 Control Unit, which can house up to three modules, and the IQ-206 Expansion Unit, which can house up to six modules. It is also possible to control IQ-206 Expansion Units with an IQ-206 Expansion Card inserted in a PC.

IQ-203 Control Unit

The IQ-203 is the mainframe of the IQ-200 Optical Test System. The IQ-203 controls all the modules, whether they are inserted in the IQ-203 itself or in an IQ-206 Expansion Unit. The standard IQ-203 integrates a Pentium MMX microprocessor PC architecture. It can be equipped with a network interface card (Ethernet or other), allowing you to connect to a Local Area Network (LAN).

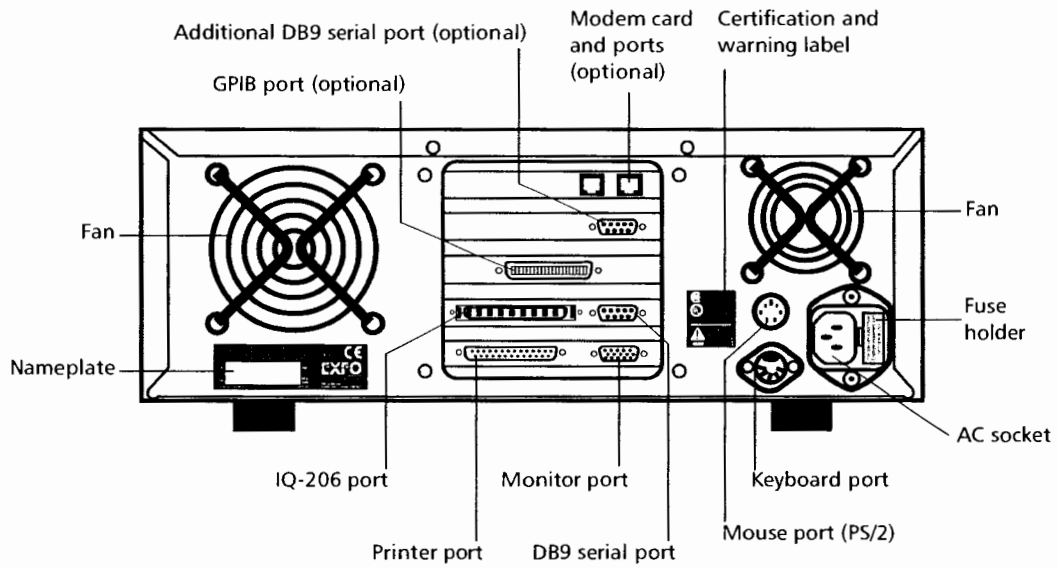
The Windows compatible IQ-200 Software simultaneously controls all modules via the IQ-203 bus. Upon delivery, this software is already installed on the IQ-203 Control Unit and ready to run. For more information about the IQ-200 Software, see *Using the IQ-200 Optical Test System* on page 35.

All software commands can be controlled with the hardware keys and mouse provided on the unit front panel. However, an external mouse and an optional keyboard allow easier operation. Also, the addition of a VGA monitor can enhance the visual aspect of the applications, just as a printer can be useful for producing hard copies.


The IQ-203 has room for three single-slot interchangeable modules and can control up to four IQ-206 Expansion Units: the total system capacity is 27 single-slot modules. For more information about a typical IQ-200 setup, see *Installing and Connecting the IQ-200 Hardware* on page 13.

In addition to operating the IQ modules, any commercial software (spreadsheets, word processors, etc.) can also be installed on the IQ-203, although the warranty may be void in certain cases.



IQ-203 Back Panel



Note: Actual ports on your unit may differ from those depicted in the illustration.



This symbol, found at the back of the IQ-203 Control Unit, indicates that you should refer to the instruction manual for fuse replacement and power rating. The fuse replacement procedure is given in *Replacing the Fuses* on page 60.

	This device complies with part 15 of the FCC rules. Operation is subject to the following two conditions: (1) this device may not cause harmful interference, and (2) this device must accept any interference received, including interference that may cause undesired operation.	 
Part number —	P/N IQ 203 -H1 B-1.0 Ver.	Product version —
Serial number —	S/N 21325-1A JANUARY 2001 Mfg. date <small>Made in Canada GST-94</small>	Manufacturing date —

IQ-206 Expansion Unit

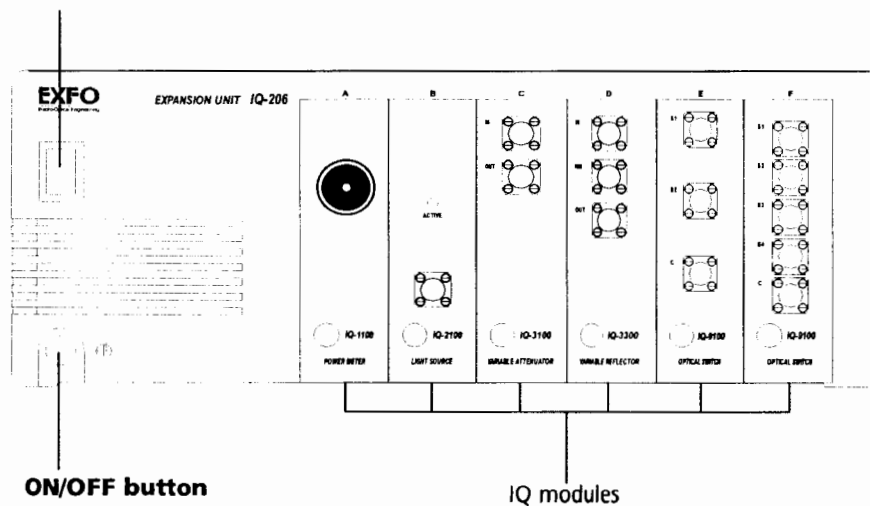
The IQ-206 is called the expansion unit of the IQ-200 Optical Test System because it is usually used to expand the module capacity of an IQ-203 Control Unit. You can link up to four IQ-206 Expansion Units to an IQ-200 Optical Test System. Each IQ-206 Expansion Unit can support up to six modules, which are either controlled from an IQ-203 Control Unit or an IQ-206 Expansion Card, via the Windows compatible IQ-200 Software.

You can find installation instructions for the IQ-206 Expansion Unit in *Installing and Connecting the IQ-200 Hardware* on page 13, as well as help with the software in *Using the IQ-200 Optical Test System* on page 35.

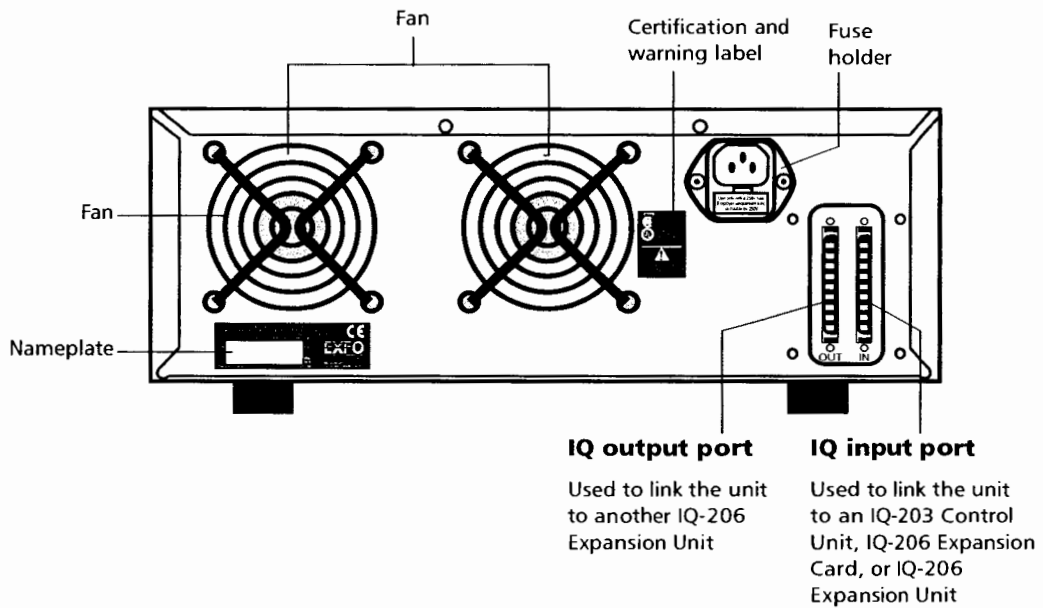
IQ-206 Front Panel


Sequential position display



Indicates the position of the unit within the IQ-200 system. The unit closest to the IQ-203 Control Unit or IQ-206 Expansion Card is numbered 1, the second closest is numbered 2, etc., up to four IQ-206 Expansion Units.



IQ-206 Back Panel



 This symbol, found at the back of the IQ-206 Expansion Unit, indicates that the user should refer to the instruction manual for fuse replacement and power rating. The fuse replacement procedure is given in *Replacing the Fuses* on page 60.

<p>Part number</p> <p>Serial number</p>	<p style="font-size: small;">This device complies with part 15 of the FCC rules. Operation is subject to the following two conditions: (1) this device may not cause harmful interference, and (2) this device must accept any interference received, including interference that may cause undesired operation.</p> <p>P/N IQ 206 -11 Ver. B-1.0</p> <p>S/N 21325-1A JANUARY 2001 Mfg. date</p> <p style="font-size: x-small;">Made in Canada QST-94</p> <div style="text-align: right;">   Electro-Optical Engineering 455 Gudder Ave. Vancouver, Canada V1M 3G7 </div>	<p>Product version</p> <p>Manufacturing date</p>
---	--	--

IQ-206 Expansion Card

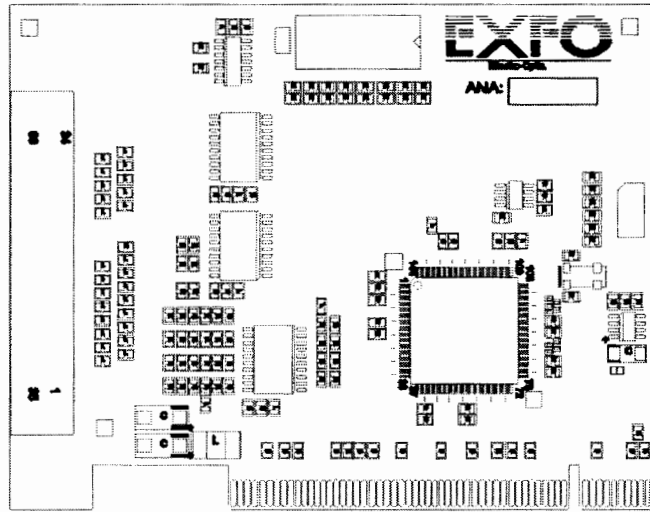
The IQ-206 Expansion Card is designed to emulate an IQ-203 Control Unit. Once installed in a PC, the IQ-206 Expansion Card allows you to control up to four IQ-206 Expansion Units, which represent 24 single-slot IQ modules.

To operate the IQ-206 Expansion Card, you need to install the Windows compatible IQ-200 Software on the host computer. The IQ-200 Software used with the IQ-206 Expansion Card is identical to the software on the IQ-203 Control Unit.

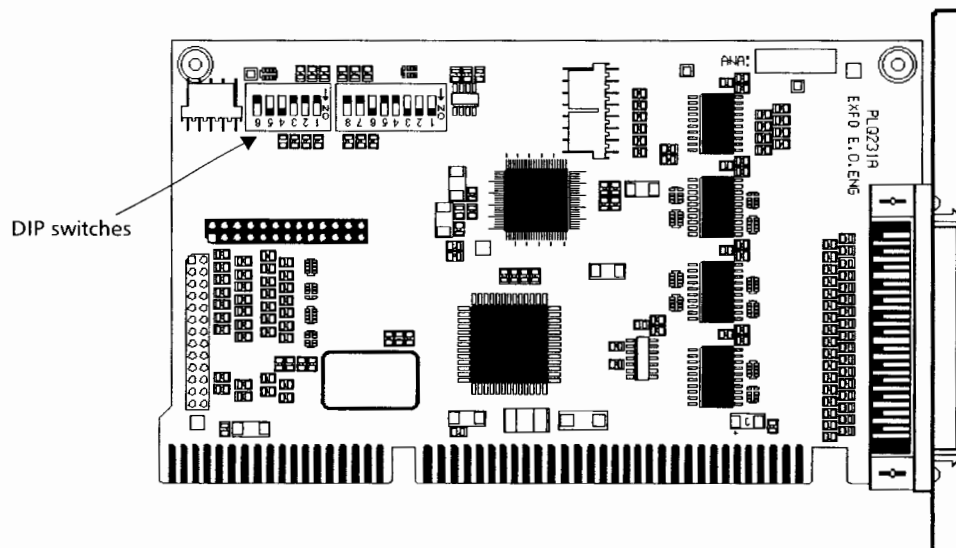
- For information about how to connect the IQ-206 Expansion Card to an IQ-206 Expansion Unit, see *Installing the IQ-206 Expansion Card* on page 19.
- For details about installing the software on a PC, see *Installing the IQ-200 Software* on page 27.
- For help with the use of the software, see *Using the IQ-200 Optical Test System* on page 35.

Your IQ-206 Expansion Card will look different depending if it is an ISA or PCI card and the installation method will be different. Use the following illustrations to determine whether your card is ISA or PCI.

PCI Expansion Card Diagram



ISA Expansion Card Diagram



Remote Control of the IQ-200 Optical Test System

In addition to stand-alone operation, the IQ-200 Optical Test System can be remotely controlled through one of the following methods:

- GPIB interface
- RS-232 external interface
- Windows OLE (Object Linking and Embedding) automation
- Windows DDE (Dynamic Data Exchange) communication channel

The *GPIB and IQ-Application Development Guide*, included with each IQ-203 Control Unit and IQ-206 Expansion Card, explains the different integrated configuration options and describes in detail how to create high-level integrated applications.

CAUTION

Devices that will allow the IQ-200 Optical Test System to be controlled remotely must be installed at the factory. Attempting to install any other device will void the product warranty.

2 Safety Information

Safety Conventions

You should understand the following conventions before using the product described in this manual:

WARNING

Refers to a potential *personal* hazard. It requires a procedure which, if not correctly followed, may result in bodily harm or injury. Do not proceed beyond a **WARNING** unless you understand and meet the required conditions.

CAUTION

Refers to a potential *product* hazard. It requires a procedure which, if not correctly followed, may result in component damage. Do not proceed beyond a **CAUTION** unless you understand and meet the required conditions.

IMPORTANT

Refers to any information regarding the operation of the product which you should not overlook.

Safety Precautions

The following safety precautions must be observed while operating and servicing the units. Failure to comply with these precautions or with specific indications elsewhere in this manual violates safety standards of intended use of the unit. EXFO assumes no liability for the user's failure to comply with these requirements.

CAUTION

Use of controls, adjustments and procedures for operation and maintenance other than those specified herein may result in hazardous radiation exposure.

Safety Information

Electrostatic Discharge Precautions

WARNING

The IQ-203 Control Unit was designed to be a test instrument that should not be opened by users. EXFO is not responsible for any personal injury incurred while attempting internal service of the IQ-203 Control Unit or IQ-206 Expansion Unit.

- Unit covers cannot be removed during operation.
- Before powering on the unit, all grounding terminals, extension cords, and devices connected to it should be connected to a protective ground via a ground socket. Any interruption of the protective ground will cause a potential shock hazard and possible personal injury.
- Whenever the ground protection is impaired, the unit must not be used and be secured against any accidental or unintended operation.
- Only fuses with the required rated current and specified type (normal blow, time delay, etc.) may be used for replacement. Do not use repaired fuses or short-circuited fuse holders.
- Any adjustments, maintenance, and repair of opened units under voltage should be carried out only by skilled personnel aware of the hazard involved. Do not replace any components while power cable is connected. EXFO is not responsible for any personal injury incurred while manipulating the unit.
- Operation of any electrical instrument around flammable gases or fumes constitutes a major safety hazard.
- Capacitors inside the unit may be charged even if the unit has been disconnected from its electrical supply.

Electrostatic Discharge Precautions

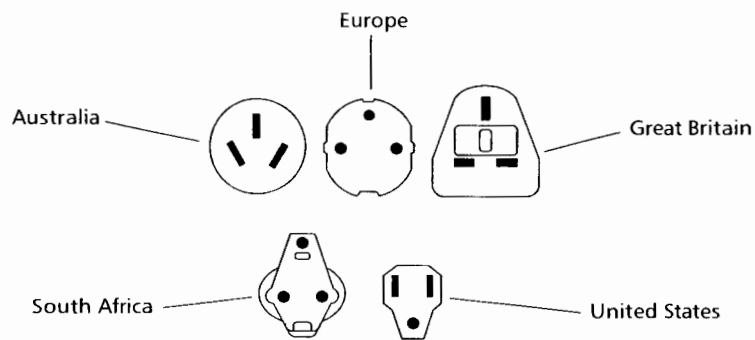
Electrostatic discharge (ESD) precautions must be taken at all times while handling the IQ-206 Expansion Card. Always work at an approved ESD work station or use an ESD ground strap when handling the IQ-206 Expansion Card.

AC and Power Cable Requirements

The IQ-203 can operate from any single-phase AC power source between 100 V and 240 V (50/60 Hz). The maximum input current of the IQ-203 is 1.5 A.

The IQ-206 can operate from any single-phase AC power source between 100 V and 240 V (50/60 Hz). The maximum input current of the IQ-206 is 3.0 A.

This unit uses an international safety standard three-wire power cable. This cable serves as a ground when connected to an appropriate AC power receptacle. The type of power cable supplied with each unit is determined according to the country of destination. The figure below illustrates the different power cables available.



Only qualified electricians should connect a new plug if needed. The color coding used in the electric cable depends on the cable. New plugs should meet the local safety requirements and include the following features:

- adequate load-carrying capacity
- ground connection
- cable clamp

Safety Information

AC and Power Cable Requirements

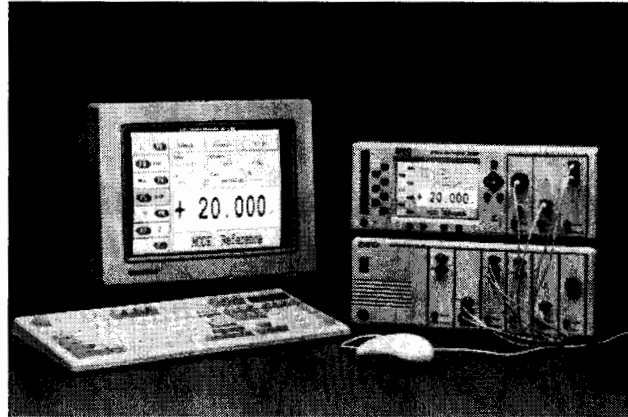
WARNING

To avoid electrical shock, do not operate the unit if there are signs of damage to any part of the outer surface (covers, panels, etc.). To avoid serious injury, the following precautions must be observed before powering ON the unit.

- If the unit is to be powered via an auto transformer for voltage reduction, connect the common terminal to the grounded power source pole.
- Insert the power cable plug into a power outlet with a protective ground contact. Do not use an extension cord without a protective conductor.
- Before powering ON the unit, connect the protective ground terminal of the unit to a protective conductor using the unit power cord.
- Do not tamper with the protective ground terminal.

3 Installing and Connecting the IQ-200 Hardware

The IQ-200 Optical Test System can include up to four IQ-206 Expansion Units connected in a daisy chain with an IQ-203, allowing 27 single-slot linked modules. Mounting all these units into a standard 19-inch equipment rack is an efficient setup, but units can easily and safely be stacked one on top of the other in benchtop format, as shown below:



Whether you select the benchtop or rack-mount setup for your system, you will always be able to take full advantage of the flexibility and expansion characteristics of the IQ-200 Optical Test System.

For additional flexibility and ease of use, you can add an external color VGA monitor, keyboard, and mouse to the IQ-203 Control Unit. The IQ modules are linked together by the IQ-203 interface bus.

Installing and Connecting the IQ-200 Hardware

Setting Up the IQ-200 for Rack-Mount Use

Setting Up the IQ-200 for Rack-Mount Use

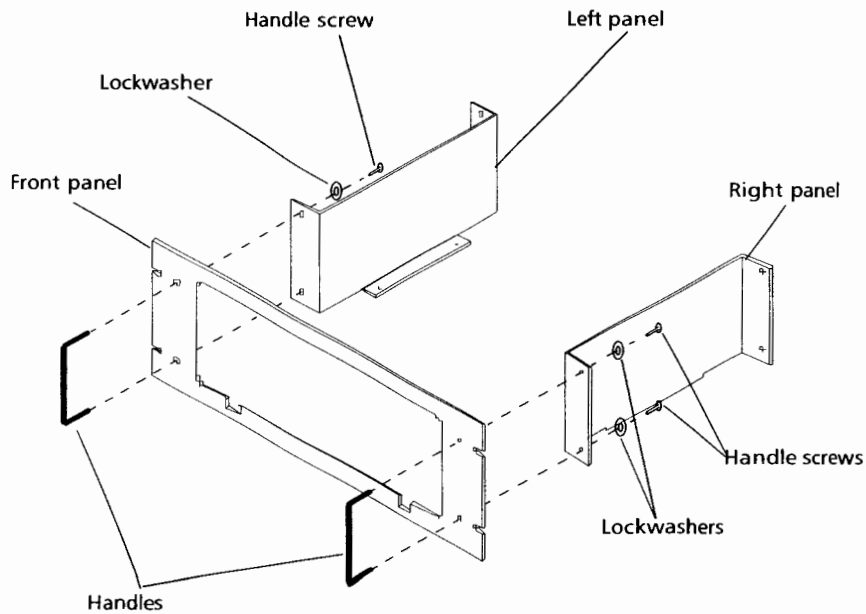
Each IQ-203 Control Unit and IQ-206 Expansion Unit has two rear cooling fans. Mount or position the units so that air can circulate freely around them. When operating the unit, choose a location that provides at least

- 75 mm (3 inches) of rear clearance
- 25 mm (1 inch) of side clearance (left and right)
- 25 mm (1 inch) of top clearance

Failure to provide adequate cooling clearance may result in an excessive internal temperature, thus reducing unit reliability.

Before being inserted into a rack, IQ-203 Control Units or IQ-206 Expansion Units must first be installed into an optional rack-mount kit. To do so,

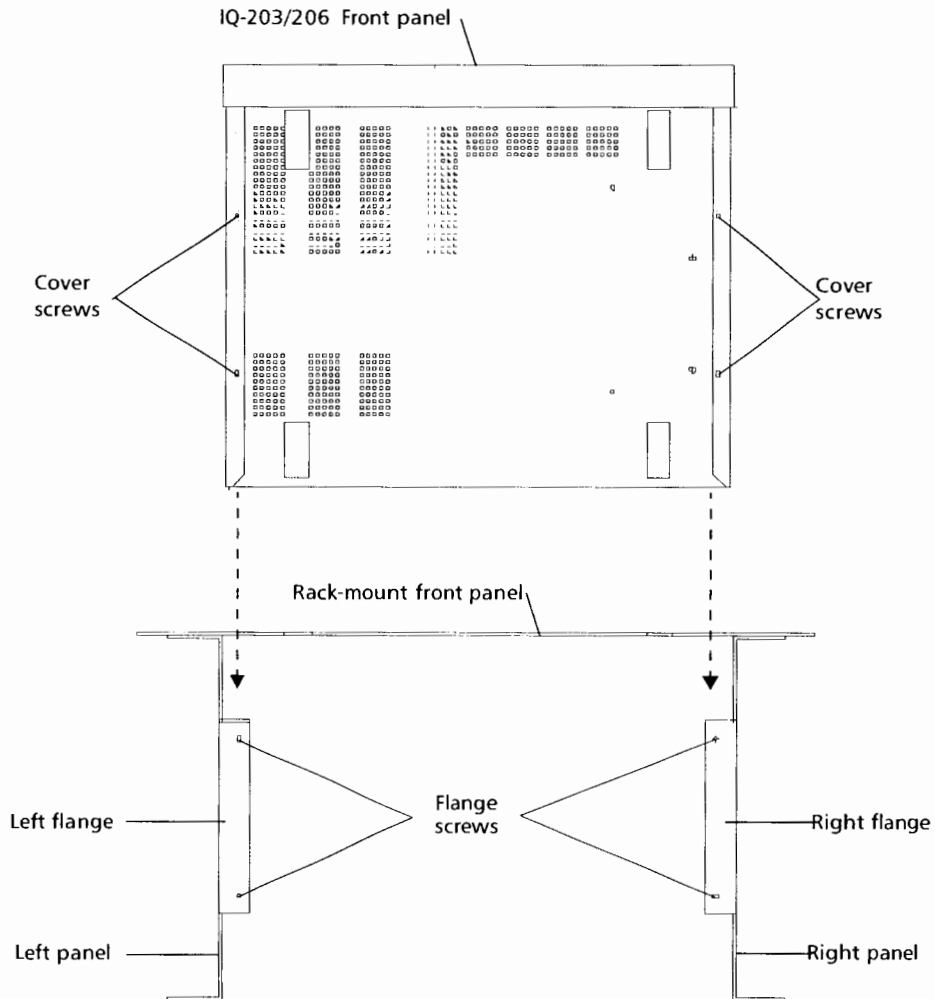
1. Assemble the rack-mount panels and handles using the screws and lockwashers supplied with the kit.



Installing and Connecting the IQ-200 Hardware

Setting Up the IQ-200 for Rack-Mount Use

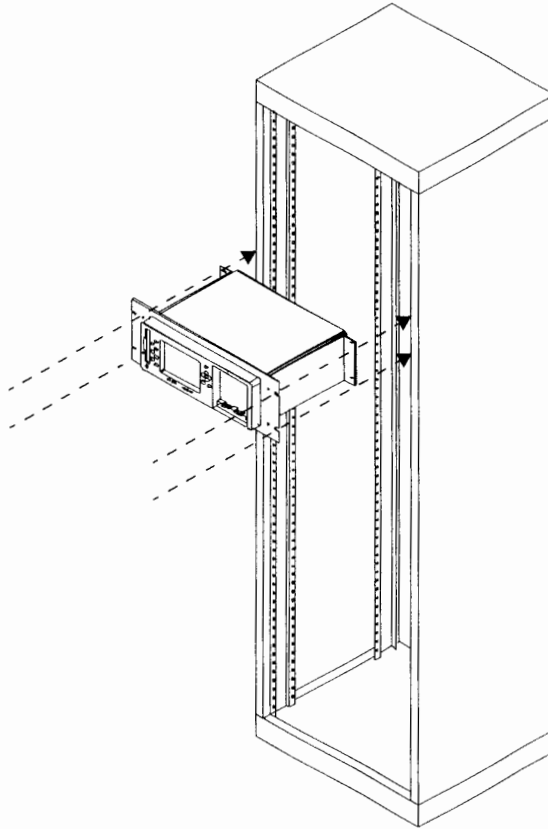
2. Power OFF the IQ-203/IQ-206 and remove the four bottom cover screws under the IQ-203/IQ-206 as shown below.
3. Slide the IQ-203/IQ-206 inward through the rack-mount front panel, with the front of the unit facing you. Be careful not to break the warranty stickers on the IQ-203/IQ-206.



Installing and Connecting the IQ-200 Hardware

Setting Up the IQ-200 for Rack-Mount Use

4. Use the flange screws and flat washers supplied with the kit to secure the IQ-203/IQ-206 onto the rack-mount flanges.
5. Insert the rack-mounted IQ-203/IQ-206 into the cabinet as shown below and secure in place using the hardware supplied with the rack.



Connecting IQ-206 Expansion Units to an IQ-203 Control Unit

Up to four IQ-206 Expansion Units can be connected to the IQ-203 Control Unit, which represents a total of 27 single-slot modules. The necessary interface cable to connect an IQ-206 Expansion Unit to another IQ-206 Expansion Unit or IQ-203 Control Unit is supplied with the IQ-206 Expansion Unit. Connections are shown on the next page.

Note: *As the IQ-206 Expansion Units are daisy chained, the sequential position is indicated by a number displayed on the unit front panel. The first unit connected to the IQ-203 is numbered 1.*

IMPORTANT

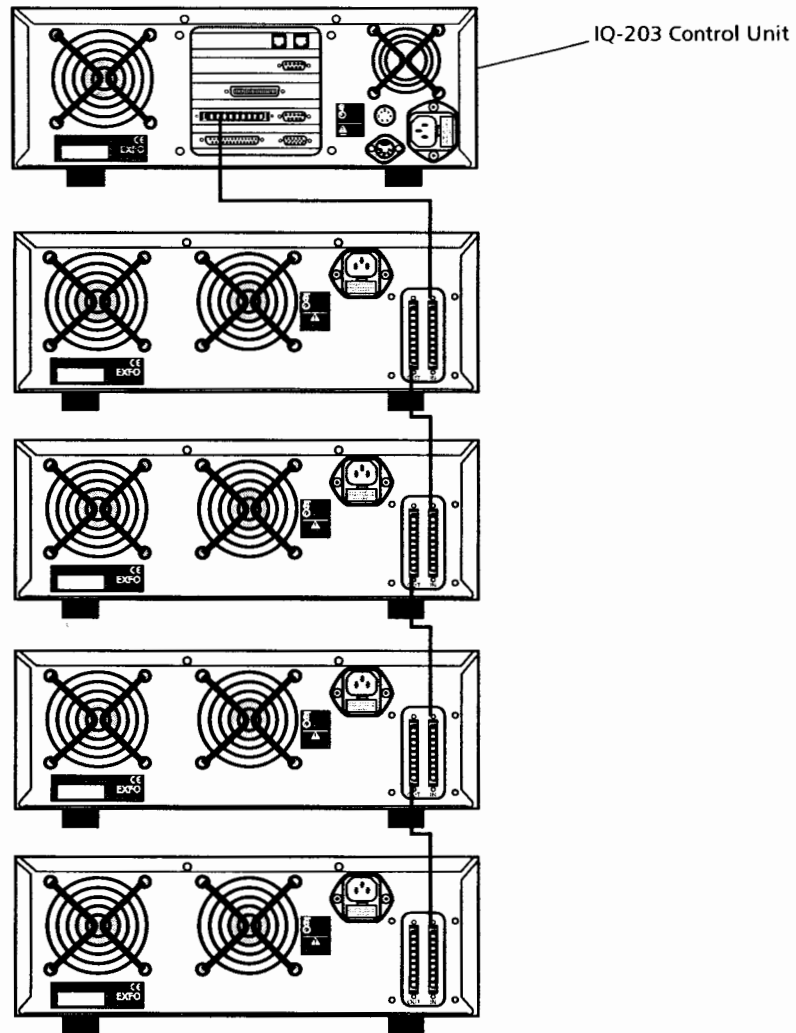
For proper connection, firmly push the IQ interface cable into the appropriate port until it clicks twice. Improper connection may cause operation problems.

IQ interface cables are offered in 2.5-, 5-, and 8-foot lengths. For proper operation, the IQ interface cables used in a system should not be more than 12 feet.

Installing and Connecting the IQ-200 Hardware

Connecting IQ-206 Expansion Units to an IQ-203 Control Unit

© 2011 Intel Corporation. All rights reserved. Intel, the Intel logo, and other marks contained herein are trademarks of Intel Corporation or its subsidiaries in the United States and other countries.



Note: Actual ports on your unit may differ from those depicted in the illustration.

Installing the IQ-206 Expansion Card

The IQ-206 Expansion Card is available in two models: ISA and PCI. Both cards provide the same functionality, but the installation procedure is not exactly the same, as explained below. To determine the type of card you have, see *IQ-206 Expansion Card* on page 6.

Minimum PC Requirements

The IQ-206 Expansion Card has a power consumption of less than 200 mA. The computer that will host the IQ-206 Expansion Card must have the following configuration:

- 486 DX4/75 with 16 MB of RAM (minimum)
- one free ISA expansion slot (AT 98-pin bus) or one free PCI slot
- Microsoft Windows 95/98 (other versions may not be supported)
- CD-ROM drive (local or via network)

Installing an ISA or PCI Card

To install the IQ-206 Expansion Card in a computer,

1. If you have an ISA card, set the DIP switches on the card as explained in *Configuring DIP Switches on ISA Card* on page 20.

Note: *PCI cards are plug-and-play and require no DIP switch setting.*

2. Power off the computer and unplug the AC cord.
3. Refer to the computer instruction manual to properly disassemble the computer cover and access the expansion slots.

IMPORTANT

Handle the IQ-206 Expansion Card as explained in *Electrostatic Discharge Precautions* on page 10.

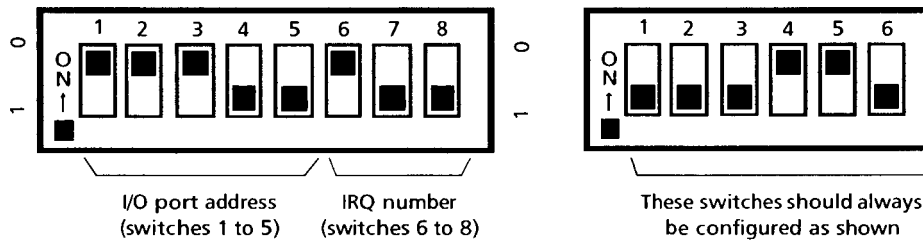
Installing and Connecting the IQ-200 Hardware

Installing the IQ-206 Expansion Card

4. Firmly insert the IQ-206 Expansion Card into any appropriate expansion slot with due care and secure the card in place.
5. Reassemble the computer cover and tightly replace every screw.
6. In the case of a PCI card, turn on the computer and ensure the card is correctly detected and its driver installed as explained in *Adding a PCI Card in Microsoft Windows* on page 23.
7. Install the IQ-200 Software (see *Installing the IQ-200 Software* on page 27).

Configuring DIP Switches on ISA Card

Hardware configuration is accomplished through DIP switches on ISA cards (see figures below). Use these DIP switches to set the I/O port address and IRQ number of the card so they do not conflict with any other card or component in your system.



Take note of your DIP switch settings. You will be asked to enter these settings at the end of the IQ-200 Software installation, so the IQ-200 Software can locate the IQ-206 Expansion Card within the system.

IMPORTANT

When setting DIP switches, the ON position is 0 and the OFF position is 1.

IMPORTANT

The 6-switch bank must always be configured as shown.

Installing and Connecting the IQ-200 Hardware

Installing the IQ-206 Expansion Card

The I/O port address is a hexadecimal number and must be any multiple of 020h within the range of 060h to 03C0h. The hexadecimal address is then converted into binary code so the DIP switches can be set to the “1” position (OFF) or to the “0” position (ON). The most commonly used I/O addresses are listed in the following table.

I/O Port Address (hexadecimal)	DIP Switch Setting				
	5	4	3	2	1
0E0h	0	0	1	1	1
100h	0	1	0	0	0
120h	0	1	0	0	1
140h	0	1	0	1	0
160h	0	1	0	1	1
200h	1	0	0	0	0
2A0h	1	0	1	0	1
2C0h	1	0	1	1	0
300h	1	1	0	0	0
320h	1	1	0	0	1
340h	1	1	0	1	0

Note: *The recommended I/O port address is 300h. Other I/O ports may be set on the card. If you are unable to determine the DIP switch settings for the desired I/O port, contact EXFO.*

Installing and Connecting the IQ-200 Hardware

Installing the IQ-206 Expansion Card

The possible IRQ numbers and their corresponding DIP switch settings are listed in the table below.

IRQ Number	DIP Switch Setting		
	6	7	8
IRQ5	0	0	0
IRQ7	1	0	0
IRQ9	0	1	0
IRQ10	1	1	0
IRQ11	0	0	1
IRQ12	1	0	1
IRQ15	0	1	1

Note: The recommended IRQ number for the IQ-206 Expansion Card is IRQ9. If the host computer is equipped with a PS/2 mouse port, do not set the IQ-206 Expansion Card to IRQ12.

Adding a PCI Card in Microsoft Windows

Microsoft Windows will detect a new PCI card when you reboot your computer and automatically offer you to install new drivers. You will need access to a CD-ROM drive for this installation.

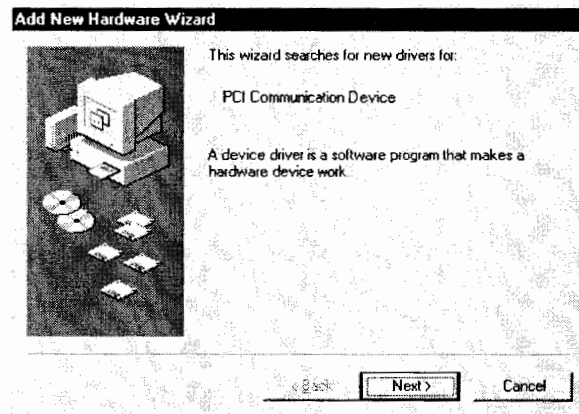
IMPORTANT

If your PC is not equipped with a CD-ROM drive, you could use the Direct Cable Connection or your network to access another PC. For help with these methods, see *Accessing a Remote CD-ROM Drive with the IQ-203* on page 79.

Note: *The illustrations provided in this section were made with Windows 98. The Wizard may look slightly different if you are using Windows 95, but the procedure is similar.*

To make Microsoft Windows correctly detect the new PCI expansion card,

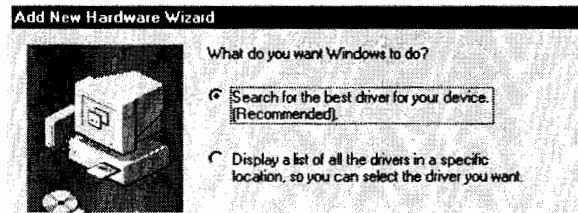
1. After inserting the PCI card into the computer, turn on the computer. When Windows is loaded, the Add New Hardware wizard will guide you through the steps of card detection.



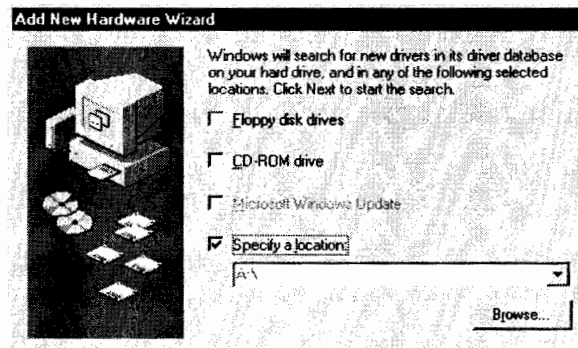
2. Click on *Next* to start searching for drivers associated with the card.

Installing and Connecting the IQ-200 Hardware

Installing the IQ-206 Expansion Card



3. Select the *Search for the best driver* option and click on *Next*.



4. Insert the CD-ROM that was included with your IQ-206 Expansion Card in your CD drive and check only the *Specify a location* box. Use the *Browse...* button to locate it and click on *Next* to start searching.

IMPORTANT

EXFO recommends that you do not use the *Floppy disk drives* or *CD-ROM drive* options. The Wizard may not recognize your drives using these options.

5. When the card driver is found, click on *Next* again to start installing it.

Connecting IQ-206 Expansion Units to an IQ-206 Expansion Card

Once installed into a PC, the IQ-206 Expansion Card can control up to four IQ-206 Expansion Units, which represents a total of 24 single-slot modules. The necessary interface cable to connect an IQ-206 Expansion Unit to another IQ-206 Expansion Unit or IQ-203 Control Unit is supplied with the IQ-206 Expansion Unit. Connections are shown on the next page.

Note: *As the IQ-206 Expansion Units are daisy chained, the sequential position is indicated by a number displayed on the unit front panel. The first unit connected to the IQ-206 Expansion Card is numbered 1.*

IMPORTANT

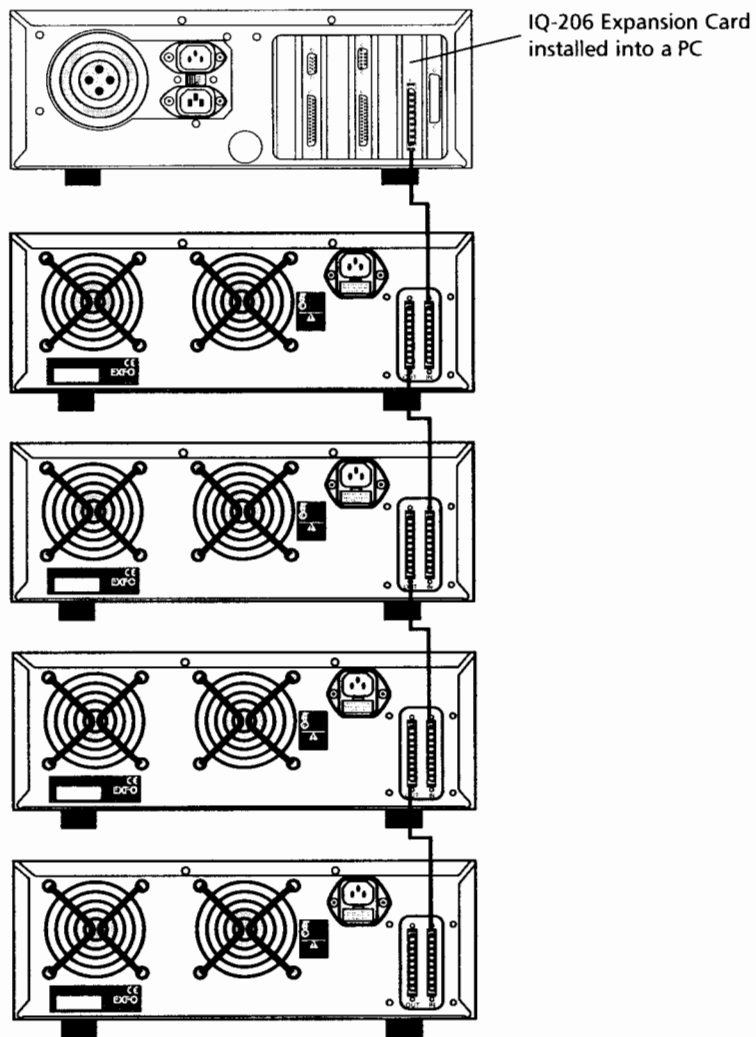
For proper connection, firmly push the IQ interface cable into the appropriate port until it clicks twice. Improper connection may cause operation problems.

IQ interface cables are offered in 2.5-, 5-, and 8-foot lengths. For proper operation, the IQ interface cables used in a system should not be more than 12 feet.

Installing and Connecting the IQ-200 Hardware

Connecting IQ-206 Expansion Units to an IQ-206 Expansion Card

© 2004 Intel Corporation. Intel, the Intel logo, and the Intel logo with "Intel Inside" are trademarks or registered trademarks of Intel Corporation or its subsidiaries in the United States and other countries.



Note: Actual ports on your unit may differ from those depicted in the illustration.

4 Installing and Configuring the IQ-200 Software

Installing the IQ-200 Software

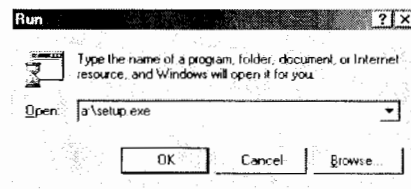
If you have purchased an IQ-203 Control Unit, the IQ-200 Software should have been pre-installed at the factory. If you are to use the software with an IQ-206 Expansion Card or if you ever need to reinstall it on your IQ-203 Control Unit, use the CD-ROM provided with your IQ-200 Optical Test System. In either case, Microsoft Windows must already be installed in the host unit.

IMPORTANT

If your PC is not equipped with a CD-ROM drive, you could use the Direct Cable Connection or your network to access another PC. For help with these methods, see *Accessing a Remote CD-ROM Drive with the IQ-203* on page 79.

To install the IQ-200 Software on an IQ-203 or on a PC,

1. Insert the installation CD in your CD-ROM drive.
2. Select *Run...* from the Windows *Start* menu.

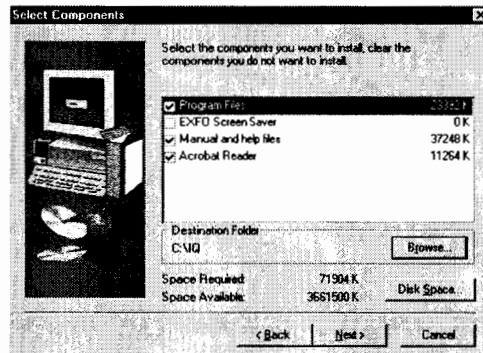


3. Type *d:\setup* (your drive letter may differ) in the *Open* text field.
4. Click on *OK* to launch the installation. The installation procedure first detects the type of platform (PC or IQ-203) on which you are installing the IQ-200 Software.
5. Close all programs, read the license agreement, and enter your name and company, clicking on *Next >* after each step.

Installing and Configuring the IQ-200 Software

Installing the IQ-200 Software

6. In the *Select Components* step, choose the software components you want to install on your IQ-203 or PC.



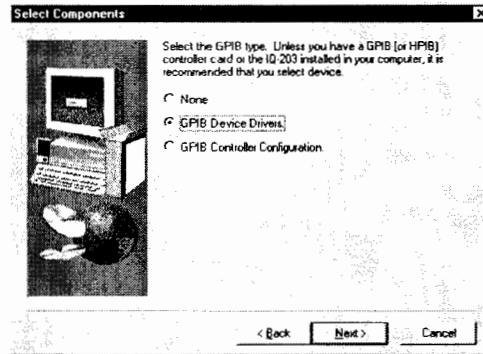
- 6a. Check the boxes corresponding to the components to install.
- *Program Files*: necessary files to use the IQ-200 Optical Test System software. This option is mandatory.
 - *EXFO Screen Saver*: a Microsoft Windows screen saver that provides information about EXFO products and features.
 - *Manual and help files*: instruction manuals of IQ modules and the IQ-200 Optical Test System, in PDF format.
 - *Acrobat Reader*: the Adobe Acrobat Reader software for viewing the PDF instruction manuals.

IMPORTANT

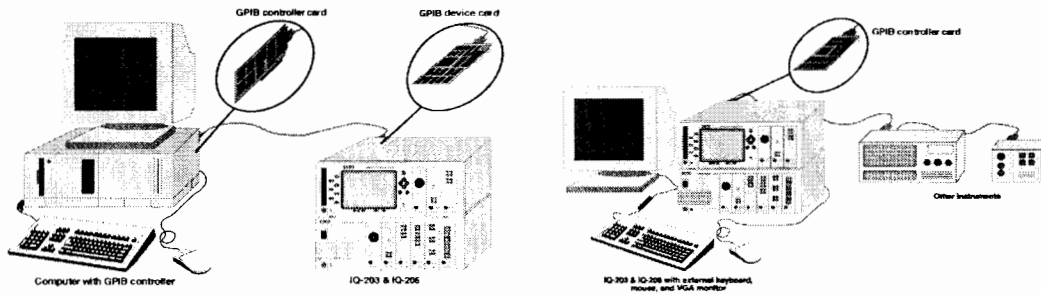
Before installing Adobe Acrobat Reader, uninstall any previous version from your PC or IQ-203. If you uninstall the older version of Acrobat Reader after installing the new one, both versions will be uninstalled.

- 6b. Keep the default destination folder (C:\IQ) as is, unless you really need to change it.
- 6c. Click on *Next >* to move to the next step.

7. In the *Select GPIB Components* step, choose the type of GPIB material you will use with your system.



- 7a. Select the radio button corresponding to your GPIB setup. Examples are given below:



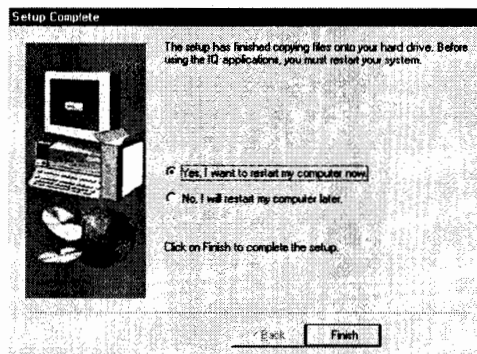
- *None*: if you have no GPIB card in your system.
- *GPIB Device Drivers*: if you have a GPIB device card in your system. This card allows your system to be remotely controlled by another instrument.
- *GPIB Controller Configuration*: if you have a GPIB controller card in your system. Use this card to remotely control other instruments.

- 7b. Click on *Next >* to move to the next step.

Installing and Configuring the IQ-200 Software

Installing the IQ-200 Software

8. Verify the installation parameters and click on *Next >* to start installing files. During the installation, you will be asked to configure the IQ-200 Software to match your hardware. For details, see *Configuring the IQ-200 Drivers* on page 31.
9. Read the information contained in the ReadMe.txt file. It provides last-minute information about the software and module applications. You can also find this file in the C:\IQ\Bin folder.
10. When the Adobe Acrobat Reader installation starts, you can choose to skip it. If you need to install Acrobat Reader later, the installation files are located on the IQ-200 Optical Test System installation media.
11. When the installation is completed, click on *OK* when you are asked to reboot your IQ-203 or computer.



12. If a Service Pack has been included with your shipment, you should install it now. Service Packs provide the latest software updates.

Note: For more information about using the IQ-200 Optical Test System and its software, see *Using the IQ-200 Optical Test System* on page 35.

Configuring the IQ-200 Drivers

When running on a PC, the IQ-200 Software must match the configuration of the IQ-206 Expansion Card. The configuration utility allows you to set the IQ-200 Software drivers to the correct IRQ and base I/O address (ISA expansion card only) and to set the GPIB card parameters.

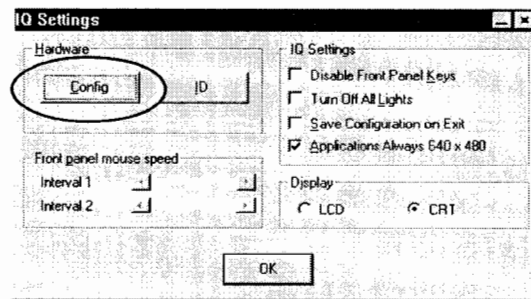
IMPORTANT

For the IQ-200 Optical Test System to function properly, it is important that no other device use the same IRQ and base I/O address.

The IQ-200 Software is configured through a small utility automatically accessed at the end of the IQ-200 Software installation. You can also access this utility at any time after the installation.

To configure the IQ-200 drivers with the IQ Configuration Tool,

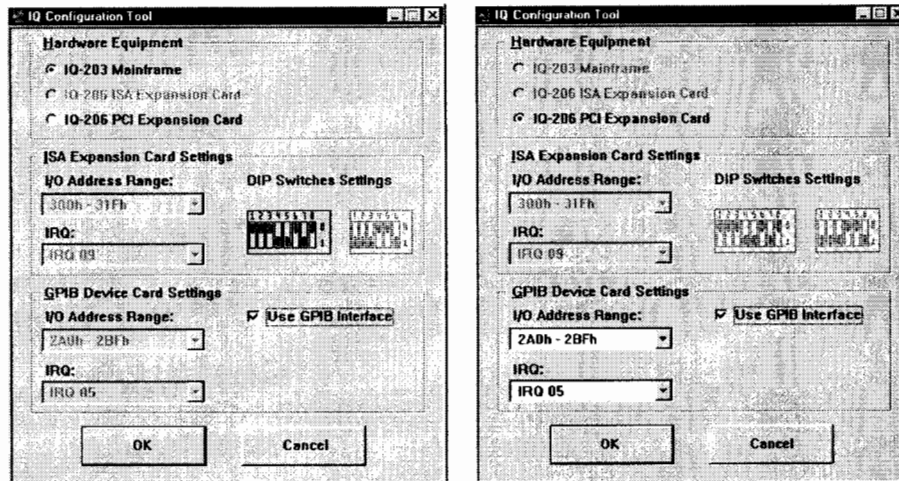
1. Open the *IQ Settings* dialog box (shown below) by double-clicking on the *IQ Settings* icon at the bottom of the main window.



2. In the *Hardware* section, click on *Config* to display the IQ Configuration Tool, as shown below.

Installing and Configuring the IQ-200 Software

Configuring the IQ-200 Drivers



The hardware equipment (IQ-203 Control Unit or IQ-206 Expansion Card) should be automatically detected.

IMPORTANT

When running on an IQ-203 Control Unit, the IQ-200 Software automatically configures itself to the default settings. In this case, you should not change the parameters in the IQ Configuration Tool.

3. If you are using an ISA expansion card, ensure that the parameters in the *ISA Expansion Card Settings* group box match the *I/O address range* and *IRQ* you have previously set on the card itself. The *DIP switch illustration* adapts to your choices.
4. If you plan to use a GPIB device card, check the *Use GPIB Interface* box and specify the *I/O Address Range* and the *IRQ* to use.
5. Click on *OK* to accept the changes and exit the IQ Configuration Tool, or click on *Cancel* to exit without applying the changes.
6. Restart your system to make the changes effective.

Uninstalling the IQ-200 Software

To uninstall the IQ-200 Software,

- 1.** In the Windows *Start* menu, select *Control Panel*.
- 2.** Select the *Add/Remove Programs* icon to display a list of all the software installed on your unit.
- 3.** Select the one(s) you wish to remove and click on *Remove*. You may be asked to reboot your computer after the operation.

This page is intentionally left blank.

5 Using the IQ-200 Optical Test System

Getting Started with the IQ-203 Control Unit

Before powering on the IQ-203 Control Unit and IQ-206 Expansion Unit, EXFO recommends that you carefully read the previous sections of this instruction manual to ensure that

- you comply with the safety precautions, power requirements, and other safety instructions given in *Safety Information* on page 9.
- you have connected the units together properly via the IQ interface cable as specified in *Connecting IQ-206 Expansion Units to an IQ-203 Control Unit* on page 17.

WARNING

Any failure to respect the safety and operation guidelines given in this manual may void the product warranty and could result in product damage or personal injury.

To power on the IQ-200 Optical Test System,

1. Make sure that all units are properly connected.
2. Insert the desired modules into the IQ-203 Control Unit and IQ-206 Expansion Units, as explained in *Inserting Modules in the IQ-203 or IQ-206* on page 39.

CAUTION

Never insert a module while the IQ-203 Control Unit or IQ-206 Expansion Unit is powered on. This will result in immediate and irreparable damage to the module and the IQ-203 or IQ-206.

Using the IQ-200 Optical Test System

Getting Started with the IQ-203 Control Unit

3. Power on the IQ-206 Expansion Unit(s) by pushing the ON/OFF button located in the bottom left corner of each unit.

IMPORTANT

Modules inserted in IQ-206 Expansion Units must be electrically powered for the IQ-200 Software to recognize them. Therefore, always power on the IQ-206 Expansion Units before powering on the IQ-203 Control Unit and loading the IQ-200 Software.

4. Power on the IQ-203 Control Unit by pushing the ON/OFF button located in the bottom left corner of the unit.

While booting up, the IQ-203 Control Unit performs the following operations in sequence:

- scans the hard disk for errors if the IQ-203 was not properly powered off. See *Scanning Hard Disks for Errors* on page 61.
- loads the Microsoft Windows operating system;
- loads the IQ-200 Software and opens the IQ-200 Optical Test System window;
- performs a self-test to demonstrate that communication has been established. During this test, the LED push buttons of all IQ modules light up in sequence.

For more information about the use of the IQ-200 Software, see *Understanding the IQ-200 Software* on page 41. If you encounter any problems, see *Maintenance and Troubleshooting* on page 59.

Getting Started with the Expansion Card

Before powering on the PC with an IQ-206 Expansion Card and the IQ-206 Expansion Units, EXFO recommends that you carefully read the previous sections of this instruction manual to ensure that

- ▶ you comply with the safety precautions, power requirements, and other safety instructions given in *Safety Information* on page 9.
- ▶ you have connected the units together properly via the IQ interface cable as specified in *Connecting IQ-206 Expansion Units to an IQ-206 Expansion Card* on page 25.

WARNING

Any failure to respect the safety and operation guidelines given in this manual may void the product warranty and could result in product damage or personal injury.

Note: For information about using the PC hosting the IQ-206 Expansion Card, refer to the instruction manual that came with the PC.

To power on the IQ-200 Optical Test Systeml,

1. Make sure that all units are properly connected.
2. Insert the desired modules into the IQ-206 Expansion Units, as explained in *Inserting Modules in the IQ-203 or IQ-206* on page 39.

CAUTION

Never insert a module while an IQ-206 Expansion Unit is powered on. This will result in immediate and irreparable damage to the module and the IQ-206.

Using the IQ-200 Optical Test System

Getting Started with the Expansion Card

3. Power on the IQ-206 Expansion Unit(s) by pushing the ON/OFF button located in the bottom left corner of each unit.

IMPORTANT

Modules inserted in IQ-206 Expansion Units must be electrically powered for the IQ-200 Software to recognize them. Therefore, always power on the IQ-206 Expansion Units before loading the IQ-200 Software.

4. Power on the computer hosting the IQ-206 Expansion Card and load Microsoft Windows (it is usually loaded automatically).
5. From the Windows *Start* menu, select *Programs > EXFO > IQ Shell*.

As the IQ-200 Software loads, it performs a self test to demonstrate that communication has been established with IQ modules. During this test, LED push buttons of all IQ modules light up in sequence.

For more information about the use of the IQ-200 Software, see *Understanding the IQ-200 Software* on page 41. If you encounter any problems, see *Maintenance and Troubleshooting* on page 59.

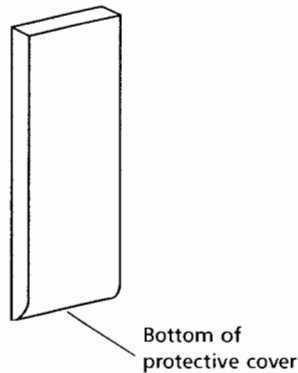
Inserting Modules in the IQ-203 or IQ-206

CAUTION

Never insert a module while the IQ-203 Control Unit or IQ-206 Expansion Card is powered on. This will result in immediate and irreparable damage to the module and the IQ-203 or IQ-206.

To insert an IQ module in the IQ-200 Optical Test System,

1. Exit the IQ-200 Software and power off the IQ-203 and IQ-206. If you are controlling modules from a PC, you do not need to turn the PC off.
2. Remove the protective cover of any unused module slot, by pulling the bottom of the cover and removing it completely.



3. Insert the IQ module into the empty slot. The IQ-203 or IQ-206 will automatically recognize which slot you selected.

IMPORTANT

Be sure to insert the module all the way to the back of the IQ-203 or IQ-206 so that the backplane connectors are properly mated. The module is correctly inserted when its front panel is flush with the IQ-203 or IQ-206 front panel.

Removing Modules from the IQ-203 or IQ-206

CAUTION

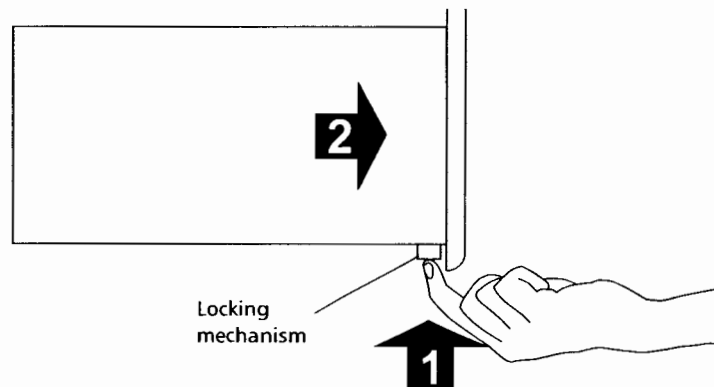
Never remove a module while the IQ-203 Control Unit or the IQ-206 Expansion Unit is powered on. This will result in immediate and irreparable damage to the module and the IQ-203 or IQ-206.

Depending on the locking system with which the module is designed, there are two ways to remove an IQ module from the IQ-203 Control Unit or IQ-206 Expansion Unit.

1. Exit the IQ-200 Software and power off the IQ-203 and IQ-206. If you are controlling modules from a PC, you do not need to turn the PC off.
2. Place your fingers under the module front panel.

OR

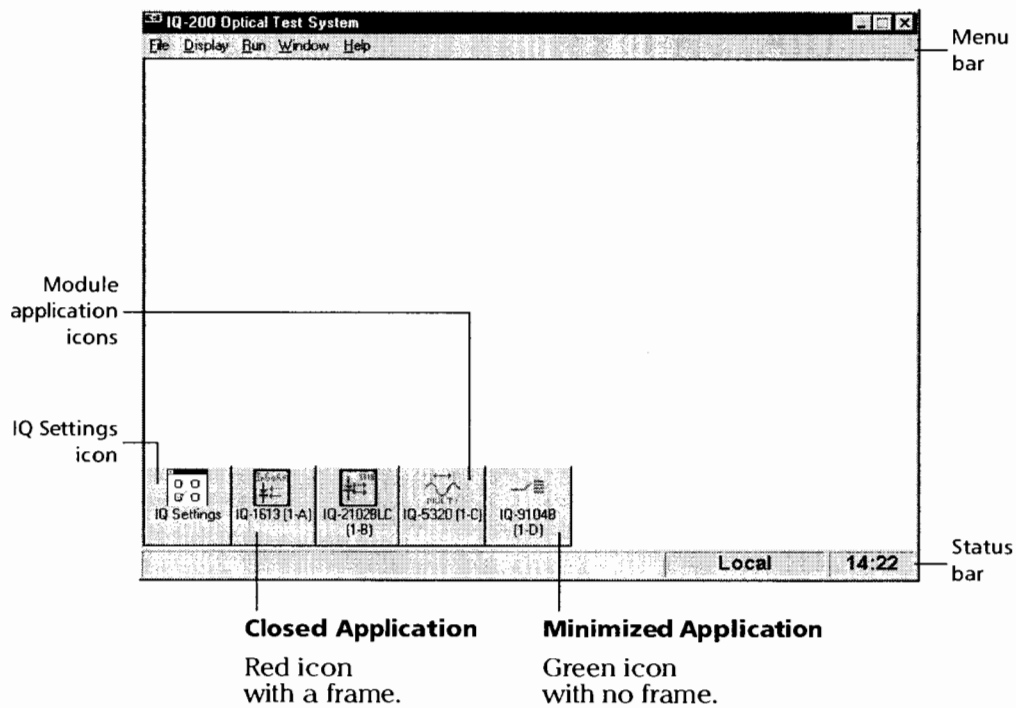
Push up the locking mechanism under the module front panel, as shown below.



3. Firmly pull the module outward.
4. Put one of the supplied protective covers over the empty slot to prevent dust from entering the module housing.

Understanding the IQ-200 Software

The IQ-200 Software main window is illustrated below.



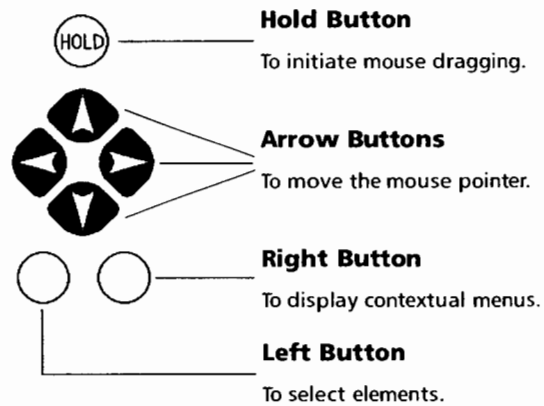
The IQ module icons represent the modules detected by the IQ-200 Optical Test System at power up.

The module icon indicates the type of module and its position in the IQ-203 Control Unit or IQ-206 Expansion Unit. The position is represented by

- a number, telling in which unit the module is inserted (0 for the IQ-203 Control Unit and 1 to 4 for the IQ-206 Expansion Units).
- a letter, telling which slot the module occupies in the unit (A to C for the IQ-203 Control Unit and A to F for the IQ-206 Expansion Units).

Using the Front Panel Mouse

The front panel mouse operates as a standard computer mouse.

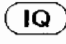
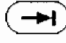

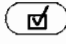




To drag elements with the front panel mouse,

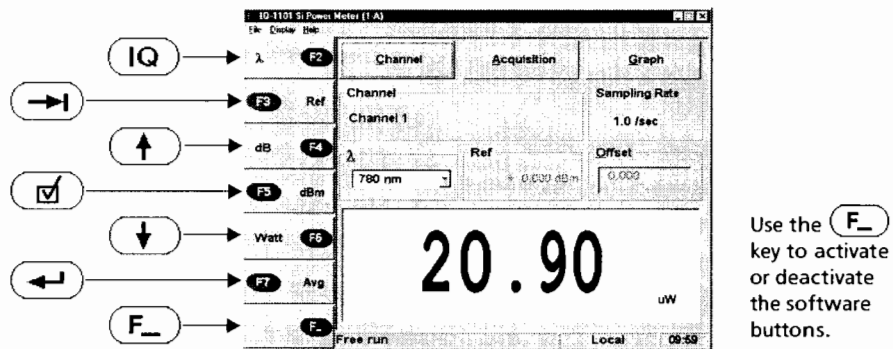
1. Using the arrow buttons, position the cursor on the selection.
2. Activate the mouse drag function by pressing the **HOLD** button.
3. Drag the selection to the desired position using the arrow buttons.
4. Press on the left button to drop the selection and deactivate the mouse drag.

Using the Front Panel Keys

The IQ-203 front panel keys may be used as hardware keys, as described:

Key	Function
	<ul style="list-style-type: none"> ➤ When another Windows application runs, return to the IQ-200 Software. ➤ When an IQ application is open, display its monitor window. ➤ When several monitor windows are open, switch between them. ➤ When all IQ-200 front panel lights are turned off (see <i>Activating and Deactivating the Front Panel Lights</i> on page 46), return to the normal LCD and LED displays.
	➤ Move between window items (as a tab).
	➤ Scroll upwards in a list box.
	➤ Select a check box option.
	➤ Scroll downwards in a list box.
	➤ Select an object or an option (as <i>Enter</i> or <i>Return</i>).

You may also use the keys to activate the software buttons aligned with them on the left side of an IQ application main window, as shown below:

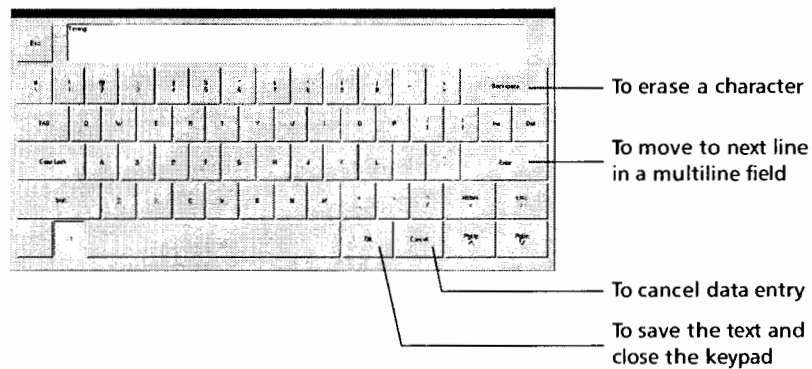
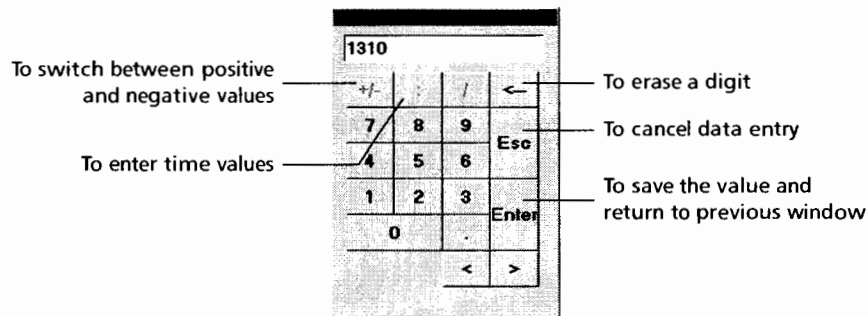


Typing Values with the Software Keypad

When an external keyboard is not available, you can use the numeric or alphanumeric software keypad to enter data in the IQ-200 Software.

To enter values using the software keypad,

1. Double-click in the box or field where a value must be entered to display the appropriate keypad window.



2. By clicking on the buttons, type the text or numbers you want. You may use the special keys shown in the above illustration while typing.
3. Save the value you typed or leave the keypad without saving the value. Keys are described in the above illustrations.

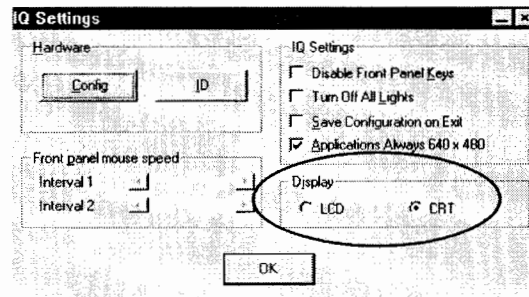
Customizing the IQ-200 Optical Test System

Selecting an LCD or CRT Screen

You can select to have the software displayed on the built-in screen of the IQ-203 Control Unit or on an external monitor.

To select the type of screen,

1. Open the *IQ Settings* dialog box (shown below) by double-clicking on the *IQ Settings* icon at the bottom of the main window.



2. Select the screen type in the *Display* section.
 - *LCD*: built-in screen of the IQ-203 Control Unit.
 - *CRT*: external monitor, if one is connected.
3. Click on *OK* to accept the changes.

Note: You can also select the desired screen type from the *Display* menu.

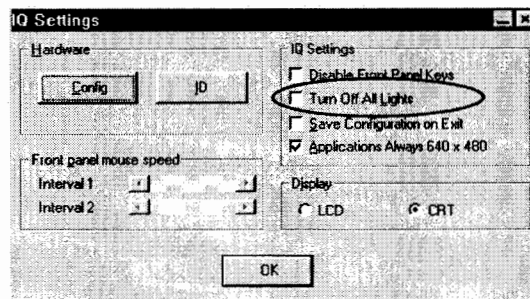
Activating and Deactivating the Front Panel Lights

You can switch off all lights on all screens and module lights on the IQ components. This is useful when you need to use the IQ-200 Optical Test System in a dark environment.

Note: Floppy disk access light and hard disk LED may sometimes illuminate.

To activate or deactivate the front panel lights,

1. Open the *IQ Settings* dialog box (shown below) by double-clicking on the *IQ Settings* icon at the bottom of the main window.



2. Check the *Turn Off All Lights* box.
3. Click on *OK* to accept the changes.

Once screens and lights are deactivated, press the **IQ** front panel key to re-activate them.

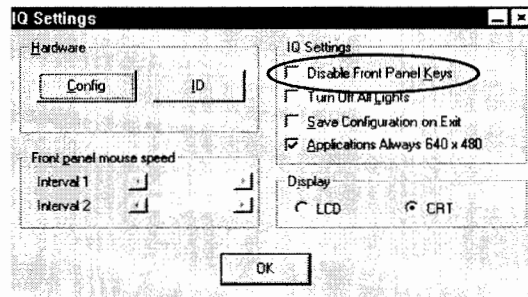
Note: You can also activate or deactivate the front panel lights directly from the *Display menu*.

Activating and Deactivating the Front Panel Keys

You can disable all front panel keys on your IQ-203 Control Unit to deny user intervention while your system is running.

To activate or deactivate the front panel keys,

1. Open the *IQ Settings* dialog box (shown below) by double-clicking on the *IQ Settings* icon at the bottom of the main window.



2. Check the *Disable Front Panel Keys* box.
3. Click on *OK* to accept the changes.

To activate the keys once they are deactivated, uncheck the box in the *IQ Settings* dialog box.

Note: You can also activate or deactivate the front panel keys directly from the *Display menu*.

Using the IQ-200 Optical Test System

Customizing the IQ-200 Optical Test System

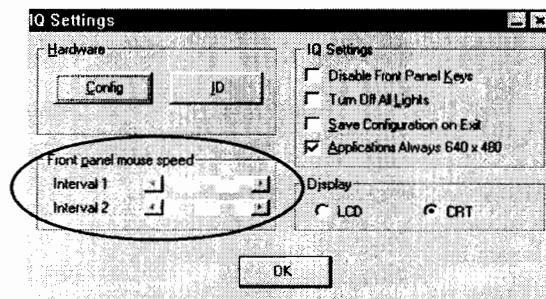
Changing Mouse Tracking Speed

You can set the delay for the first and second increase in tracking speed on your front panel mouse.

Note: *This feature is enabled in non-Pentium systems only.*

To change the front panel mouse speed,

1. Open the *IQ Settings* dialog box (shown below) by double-clicking on the *IQ Settings* icon at the bottom of the main window.



2. Move the scroll bars for *Interval 1* or *Interval 2*.
3. Click on *OK* to accept the changes.

Selecting and Configuring a Printer

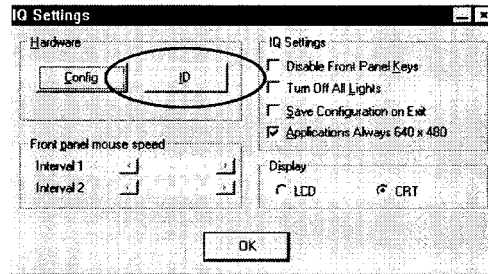
The printer selection procedure for the IQ-200 Optical Test System is the same as for any Windows-compatible software. Refer to the Microsoft Windows documentation for further details.

Renaming Modules

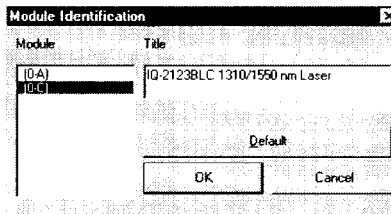
You can customize the text appearing in the title bar of a module application. This may be useful when you use several similar modules.

To modify the module name,

1. Open the *IQ Settings* dialog box (shown below) by double-clicking on the *IQ Settings* icon at the bottom of the main window.



2. Click on the *ID* button in the *Hardware* section to display the *Module Identification* dialog box (shown below).



3. Select a module slot in the *Module* list. When you do so, the module's current title appears on the right.
4. Change the current title using one of the following methods:
 - Type a new name or change the current name in the title box.
 - Click on *Default* to return to the factory-defined name.
5. Click on *OK* to accept the changes.

Using the IQ-200 Optical Test System

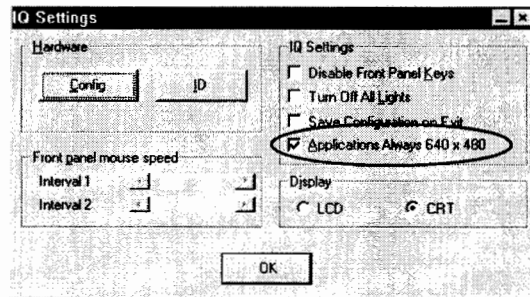
Customizing the IQ-200 Optical Test System

Setting the Display Resolution for Module Applications

You can set all module applications to automatically launch in 640 x 480 display resolution. Otherwise, applications will launch in the default resolution of your PC.

To ensure that all module applications start in 640 x 480 resolution,

1. Open the *IQ Settings* dialog box (shown below) by double-clicking on the *IQ Settings* icon at the bottom of the main window.



2. Check the *Applications Always 640 x 480* box.
3. Click on *OK* to accept the changes.

Opening and Saving a Software Configuration

Configuration files allow you to store commonly used parameters to reuse them later. Parameters that are saved include:

- ▶ position and size of monitor windows and module icons
- ▶ parameters defined in the *IQ Settings* dialog box

To open a previously saved configuration,

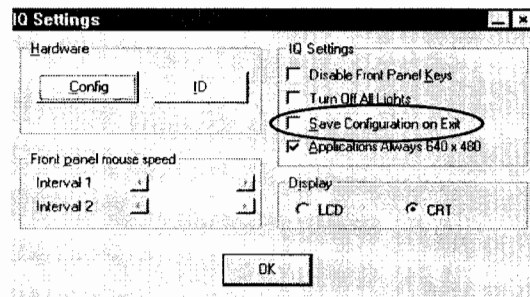
1. Select *Open Config...* from the *File* menu.
2. In the *Open config* dialog box, select a .CFG file.
3. Click on *OK*.

To save the current configuration at any time,

1. Select *Save Config...* from the *File* menu.
2. In the *Save config* dialog box, name your configuration (.CFG) file.
3. Click on *OK*.

To automatically save the current configuration when exiting the software,

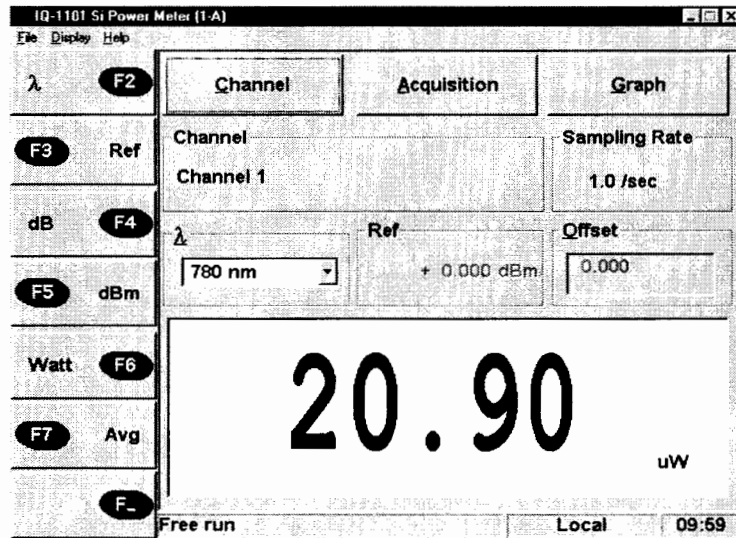
1. Open the *IQ Settings* dialog box (shown below) by double-clicking on the *IQ Settings* icon at the bottom of the main window.



2. Check the *Save Configuration on Exit* box.
3. Click on *OK* to accept the changes.

Starting and Using Module Applications

The main window of a module application contains all module operation commands. As an example, the main window of the IQ-1100 Power Meter application is shown below:



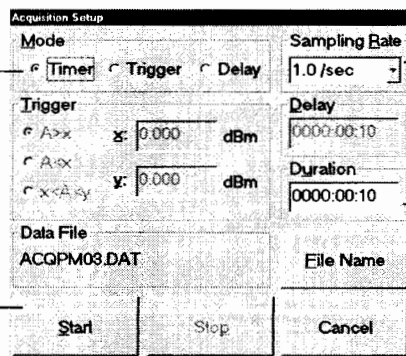
The IQ-200 Software is based on the Microsoft Windows operating system, so most module applications use standard Windows elements, such as:

Radio buttons

Provide a choice between two or more options, from which you may select only one.

Software buttons

to initiate an action or open a secondary dialog box.



List boxes

Single value with a pull-down arrow. Contains many values, from which you select one.

Edit boxes

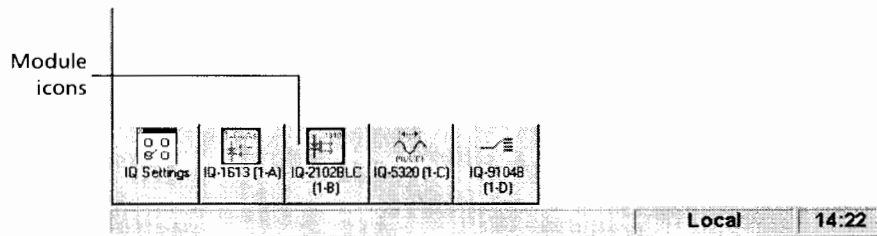
Data display and entry box that contains a value you may modify.

Note: For details about a particular module application, refer to the instruction manual of the IQ module. A list of available IQ modules is given in IQ Modules and Typical Applications on page 71.

Starting the Module Application

To open an IQ module application and display its main window,

- Double-click on the desired module icon along the bottom of the IQ Software main window.



OR

- Press the LED button on the module front panel.

Note: Module applications may be set to automatically launch in 640 x 480 display resolution. For details, see Setting the Display Resolution for Module Applications on page 50.

Exiting the Module Application

To exit a module application,

- Click on **x** in the top right corner of the application main window.

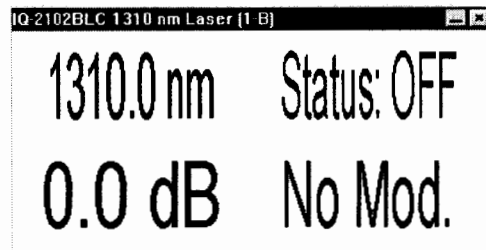
OR

- Click on **x** in the top right corner of the module monitor window.

Displaying the Module Monitor Window

The monitor window of a module is a small window containing basic operation information for quick reference. It is ideal for use in tile format on the screen (27 monitor windows can be viewed simultaneously).


The monitor window for the IQ-1100 Power Meter is shown below:



Note: Refer to the instruction manual that came with your particular module for further information about its monitor window.

Opening a Monitor Window

To open the monitor window of a module, use one of the following ways:

- In the main window of the module application, select *Monitor* from the *Display* menu.
- Minimize the module application main window by clicking on  in the upper right corner.
- While the main window of the module application is displayed, press the LED button on the module front panel.

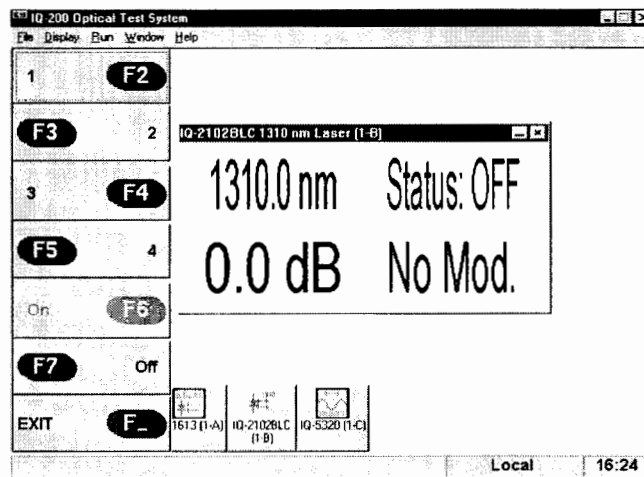
Arranging Monitor Windows on the Screen

To arrange all open monitor applications on the screen in a standard Windows cascade format, select *Cascade* from the *Window* menu.

To arrange all open monitor applications on the screen in a standard Windows tile format, select *Tile* from the *Window* menu.

Showing or Hiding the Function Button Keypad

You can right-click on the required monitor window to access the function button keypad as shown below. Clicking anywhere outside the function button keypad will hide the latter.



Closing the Monitor Window

To close the monitor window and return to the module main window, double-click anywhere in the monitor window.

Controlling the IQ-200 Remotely

The status bar indicates the module control status as described in the following table. For more information about remotely controlling the IQ-200 Optical Test System, refer to the *GPIB and Application Development Guide*.

Indication	Meaning
Local	The IQ-200 Optical Test System is controlled locally.
Remote	The IQ-200 Optical Test System is controlled remotely but local commands can still be used.
Lockout	The IQ-200 Optical Test System is controlled remotely only.

To use the SCPI Manager utility, select *SCPI Manager* from the Run menu. For details about this utility, refer to the *GPIB and Application Development Guide*.

Exploring Drive Contents and Running External Software

To explore the contents of your local or network drives and run external software, use one of the following options from the *Run* menu:

Option	Function
Explorer	Opens Windows Explorer.
Drive A:	Gives access to drive A: through Windows Explorer.
Drive C:	Gives access to drive C: through Windows Explorer.

Getting Help in the IQ-200 Software

The following table describes the possible ways to obtain help or information from the *Help* menu:

Option	Function
<i>Online Manual</i>	Opens this instruction manual in PDF format. You need to have Adobe Acrobat Reader installed on your IQ-200 Optical Test System.
<i>Tip of the day</i>	Displays the <i>Tip of the Day</i> dialog box.
<i>About...</i>	Displays a dialog box containing the following information: <ul style="list-style-type: none">➤ IQ-200 Software version➤ contact information for technical support➤ available IQ-203 system memory (RAM)➤ remaining disk space on current drive

Powering the IQ-200 Optical Test System Off


IMPORTANT

Before powering off the IQ-203 Control Unit and IQ-206 Expansion Units, you must exit the IQ-200 Software and shut down Microsoft Windows.

To exit the IQ-200 Software and Microsoft Windows,

- 1.** In the IQ-200 Optical Test System main window, select *Exit* from the *File* menu.

OR

Click on  in the top right corner of the main window.

An information window will appear indicating a subsequent deactivation of all module applications.

- 2.** Choose *OK* to close all IQ module applications.
- 3.** Shut down Microsoft Windows from the Windows *Start* menu.

To power off the IQ-203 Control Unit or IQ-206 Expansion Units, push the ON/OFF button located in the bottom left corner of each unit.

6 Maintenance and Troubleshooting

The IQ-200 Optical Test System family components have been designed to require a minimum of maintenance and provide reliable operation for many years. In addition, the IQ-203 has the same characteristics as a computer, therefore, similar care should be taken.

Cleaning the IQ-203 Control Unit and IQ-206 Expansion Unit

To help ensure long, trouble-free operation,

- keep the unit free of dust;
- be careful not to spill liquids into the unit. If the unit does get wet, turn the power off immediately, and let the unit dry completely before turning it on again; and
- clean the unit with a slightly damp (with water) cloth.

To prevent dirt and dust from entering the module housing, replace the protective cover plate when a slot is not in use.

Maintenance and Troubleshooting

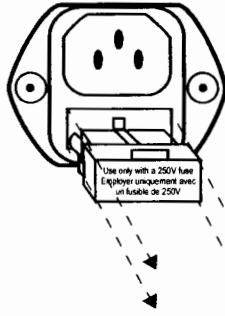
Replacing the Fuses

Replacing the Fuses

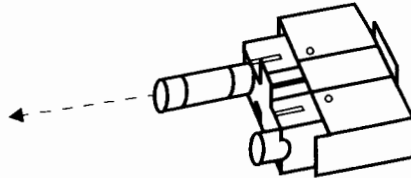
The IQ-203 Control Unit and IQ-206 Expansion Unit each contain two 250 V, 3.15 A (0.197 x 0.787 inches / 5 x 20 mm) slow blow fuses. The fuse holder is located on the unit back panel, just beside the socket.

To replace the fuses,

1. Unplug the power cord from the unit.
2. Pull the fuse holder out.



3. Verify and replace the fuses if necessary.



4. Ensure that the fuses are firmly in the holder prior to reinsertion.
5. Firmly push the holder back into place.

Defragmenting Drives and Files

Over time, as applications read, write, and delete files, information stored on the IQ-203 Control Unit hard disk may become fragmented. Basically, fragmented files are longer to access and read than unfragmented files. To reorganize the files on the disk and, thus, optimize disk performance, it is recommended to perform a defragmentation at least weekly.

To initiate a defragmentation, from Windows Explorer go to C:\WINDOWS and double-click on the file DEFRAG.EXE. For more information on ScanDisk, refer to the Microsoft Windows documentation.

Scanning Hard Disks for Errors

Microsoft ScanDisk is a program used to detect errors on a computer drive. Once found, the erroneous files are fixed and saved in the drive's root directory, under the name «FILE0000.CHK», «FILE0001.CHK», «FILE0002.CHK», etc.

In the Windows environment, a ScanDisk is automatically performed at power up every time the IQ-200 Optical Test System has not been properly shut down. It is recommended to verify the «.CHK» files from time to time and delete the needless ones to free disk space.

Every time a ScanDisk is performed, the results of the disk analysis are stored in the SCANDISK.LOG file. The SCANDISK.LOG is used to identify any erroneous files detected at startup. It is recommended to occasionally delete this file to prevent it from wasting disk space. For more information on ScanDisk, refer to the Microsoft Windows documentation.

Troubleshooting the IQ-203 Control Unit and IQ-206 Expansion Unit

Problem	Probable Cause	Recommended Action
IQ-203 or IQ-206 does not power ON.	AC power not applied.	Verify AC power cord connection, then power on IQ-203 or IQ-206.
	Fuse blown	Verify the fuses (see <i>Replacing the Fuses</i> on page 60).
Blank LCD/CRT display on IQ-203	LCD/CRT display not activated	Press the (IQ) front panel key, or select an LCD/ CRT display in <i>Display</i> menu when LCD/CRT lights up.
	External display not on	Turn on external display.
Panel keys, mouse, and/or keyboard do not respond.	No communication between keys/mouse/keyboard and computer	Power OFF IQ-203 and IQ-206 Expansion Units and secure IQ modules in place as well as verify mouse, keyboard, and all cable connections, then power on IQ-203.
LCD flickers	Improper color scheme setting	Exit the IQ-200 Software and access the Windows Control Panel. Double-click on <i>Display</i> . In the <i>Display Properties</i> window, choose the <i>Appearance</i> tab. From the <i>Scheme</i> list, select <i>High Contrast White</i> .
IQ-206 Expansion Unit sequential position display indicates "E".	IQ-206 Expansion Unit not connected to IQ-203 or to IQ-206 Expansion Card.	Power OFF IQ-203 and IQ-206; properly connect interface cable; then power on IQ-206, followed by IQ-203.

Troubleshooting the IQ-206 Expansion Card

Problem	Probable Cause	Recommended Action
IQ-200 Software does not detect IQ modules installed in an IQ-206 Expansion Unit.	<ul style="list-style-type: none"> ➤ The IQ-206 Expansion Unit is not powered on. ➤ The modules are not properly inserted into their slot. ➤ The IQ interface cable is not properly connected. ➤ The card is not properly connected. ➤ The IQ-206 Expansion Card conflicts with another card installed in the computer. 	<ol style="list-style-type: none"> 1. Power off the PC running the IQ-200 Software and power off the IQ-206 Expansion Unit. 2. Make sure the modules are properly inserted into their slots. 3. Make sure the IQ interface cable is properly connected. 4. Make sure the IQ-206 Expansion Card is properly installed. 5. Make sure other cards installed in the computer do not conflict with the IQ-206 Expansion Card. 6. Power on the IQ-206 Expansion Unit and load the IQ-200 Software.
PC hosting the IQ-206 Expansion Card does not boot.	IQ-206 Expansion Card is not properly installed.	Remove the card from the host computer, clean the edge connectors of the card, then reinstall the card as described in <i>Installing the IQ-206 Expansion Card</i> on page 19.
	Address conflict	Verify that I/O ports address and IRQ of other cards do not conflict with that of IQ-206 Expansion Card (see <i>Configuring DIP Switches on ISA Card</i> on page 20).
Mouse or keyboard not responding.	Address conflict	Verify that I/O ports address and IRQ do not conflict with that of IQ-206 Expansion Card (see <i>Configuring DIP Switches on ISA Card</i> on page 20).

Transportation and Storage

Maintain a temperature range within specifications when transporting or storing the unit. Transportation damage can occur from improper handling. The following steps are recommended to minimize the possibility of damage:

- Pack the unit in the original packing material when shipping.
- Store unit at room temperature in a clean and dry area. Avoid high humidity or large temperature fluctuations.
- Keep the unit out of direct sunlight.
- Avoid unnecessary shock and vibration.

Contacting the Customer Service Group

If you encounter any difficulty while using this product, please call EXFO at one of the offices listed below. Our Customer Service Group is available in North America from 7:30 a.m. to 8:00 p.m. (Eastern Time), Monday to Friday.

EXFO Electro-Optical Engineering Inc.
(Corporate Headquarters)
465 Godin Avenue
Vanier (Quebec) G1M 3G7
CANADA

1 800 663-3936 (USA and Canada)
Tel.: (418) 683-0211
Fax: (418) 683-2170
support@exfo.com
www.exfo.com

EXFO Europe
Centre d'Affaires Les Metz
100, rue Albert Calmette
78353 Jouy-en-Josas
FRANCE

Tel.: +33.1.34.63.00.20
Fax: +33.1.34.65.90.93

7 *Technical Specifications*

Electrical Specifications

	IQ-203 Control Unit	IQ-206 Expansion Unit	IQ-206 Expansion Card
Supply voltage	100 to 240 VAC	100 to 240 VAC	—
Line frequency	50 to 60 Hz	50 to 60 Hz	—
Maximum input current	1.5 A	3.0 A	—
Fuse	250 V, 3.15 A slow blow	250 V, 3.15 A slow blow	—
Installation overvoltage category	II	II	—
Power	—	—	5 VDC <200 mA

Mechanical Specifications

	IQ-203 Control Unit	IQ-206 Expansion Unit	IQ-206 Expansion Card
Number of slots	3	6	—
Dimensions	Width: 14.25"/36 cm	Width: 14.25"/36 cm	Thickness: 0.8"/2.0 cm
	Height: 5.75"/14.5 cm	Height: 5.75"/14.5 cm	Height: 4.8"/12.2 cm
	Length: 12"/30.5 cm	Length: 12"/30.5 cm	Length: 6.5"/16.4 cm
LCD (VGA) monitor	Width: 5"/12.5 cm	—	—
	Height: 3.5"/9 cm	—	—
Weight	11.7 lb/5.3 kg	7.7 lb/3.5 kg	—

Technical Specifications

Environmental Specifications

Environmental Specifications

	IQ-203 Control Unit	IQ-206 Expansion Unit	IQ-206 Expansion Card
Operating temperature	32° to 122°F (0° to +50°C)	32° to 131°F (0° to +55°C)	32° to 131°F (0° to +55°C)
Storage temperature	-4° to 140°F (-20° to +60°C)	-40° to 158°F (-40° to +70°C)	-4° to 140°F (-20° to +60°C)
Relative humidity	80% (non-condensing)	95% (non-condensing)	95% (non-condensing)
Maximum altitude	6000 ft./2000 m	6000 ft./2000 m	
Pollution degree	2	2	

8 **Warranty**

General Information

EXFO Electro-Optical Engineering Inc. (EXFO) warrants this equipment against defects in material and workmanship for a period of two years from the date of original shipment. EXFO also warrants that this equipment will meet applicable specifications under normal use.

During the warranty period, EXFO will, at its discretion, repair, replace, or issue credit for any defective product. This warranty also covers recalibration during a two-year period if the equipment is repaired or if the original calibration is erroneous.

IMPORTANT

The warranty can become null and void if

- the equipment has been tampered with, repaired, or worked upon by unauthorized individuals or non-EXFO personnel.
- the warranty sticker has been removed.
- case screws, other than those specified in this manual, have been removed.
- the case has been opened, other than as explained in this manual.
- the equipment serial number has been altered, erased, or removed.
- the equipment has been misused, neglected, or damaged by accident.

THIS WARRANTY IS IN LIEU OF ALL OTHER WARRANTIES EXPRESSED, IMPLIED, OR STATUTORY, INCLUDING BUT NOT LIMITED TO THE IMPLIED WARRANTIES OF MERCHANTABILITY AND FITNESS FOR A PARTICULAR PURPOSE. IN NO EVENT SHALL EXFO BE LIABLE FOR SPECIAL, INCIDENTAL, OR CONSEQUENTIAL DAMAGES.

Warranty

Liability

Liability

EXFO shall not be liable for damages resulting from the use of the purchased product, nor shall be responsible for any failure in the performance of other items to which the purchased product is connected or the operation of any system of which the purchased product may be a part.

EXFO shall not be liable for damages resulting from improper usage or unauthorized modification of the product, its accompanying accessories and software.

Exclusions

EXFO reserves the right to make changes in the design or construction of any of its products at any time without incurring obligation to make any changes whatsoever on units purchased. Accessories, including but not limited to fuses, pilot lamps, and batteries used with EXFO products are not covered by this warranty.

Certification

EXFO certifies that this equipment met its published specifications at the time of shipment from the factory.

Service and Repairs

EXFO commits to providing product service and repair for five years after the date of purchase.

For service or repair of any equipment, follow the procedure below:

- 1.** Call EXFO Customer Service Group. Support personnel will determine if the equipment requires service, repair, or calibration.
- 2.** If the equipment must be returned to EXFO or an authorized service center, support personnel will issue a Return Merchandise Authorization (RMA) and an address for return.

IMPORTANT

Never send any unit or accessory back to EXFO without a Return Merchandise Authorization (RMA).

- 3.** If the unit has an internal storage device, do a backup of your data before sending the unit for repairs.
- 4.** Pack the equipment in its original shipping material. Be sure to include a statement or report fully detailing the defect and the conditions under which it was observed.
- 5.** Return the equipment, prepaid, to the address given by the support personnel. Be sure to write the RMA on the shipping slip. EXFO will refuse and return any package that does not bear an RMA.

Note: *A test setup fee will apply to any returned unit that, after test, is found to meet the applicable specifications.*

After repair, the equipment will be returned with a repair report. If the equipment is not under warranty, the customer will be invoiced for the cost appearing on this report. Return-to-customer shipping costs will be paid by EXFO for equipment under warranty. Shipping insurance is at the customer's expense.

This page is intentionally left blank.

A IQ Modules and Typical Applications

List of IQ Modules

The following table lists the IQ modules available when this instruction manual was printed. To obtain the most recent information or for further details, please contact EXFO.

Module Number	Module Descriptive Name	Module Number	Module Descriptive Name
IQ-1100	Power Meter (single channel)	IQ-5100B	Polarization Controller
IQ-1200	4-Channel Power Meter	IQ-5240	Optical Spectrum Analyzer
IQ-1500	Calibration Power Meter	IQ-5310	Wavelength Meter
IQ-1600	High-Speed Power Meter Series (1, 2, or 4 channels)	IQ-5320	Multi-Wavelength Meter
IQ-2100	Light Source	IQ-5500	PMD Analyzer
IQ-2300	ASE Broadband Source	IQ-6100	Erbium Doped Fiber Amplifier
IQ-2400	WDM Laser Source	IQ-7200	Multimode OTDR Series
IQ-2600	Tunable Laser Source	IQ-7300B	Singlemode OTDR Series
IQ-2600B	Tunable Laser Source	IQ-7400B	Singlemode OTDR Series
IQ-3100	Variable Attenuator	IQ-7500B	Singlemode OTDR Series
IQ-3200	Return Loss Meter	IQ-9100	Fiber-Optic Switch
IQ-3300	Variable Reflector	IQ-9600	Utility Module
IQ-3400B	PDL/OL Analyzer	IQ-9700	Passive Depolarizer

IQ Modules and Typical Applications

Typical Applications for IQ Modules

© 2011 Avago Technologies International (Singapore) Private Limited. All rights reserved. Avago, the Avago logo, and IQ are trademarks of Avago Technologies International (Singapore) Private Limited. All other trademarks are the property of their respective owners.

Typical Applications for IQ Modules

The following table gives some typical test applications and the necessary IQ modules.

Passive Component Testing	IQ-1600	IQ-1500	IQ-1200	IQ-1100	IQ-2100	IQ-3200	IQ-3300	IQ-5500	IQ-3400B	IQ-5100B	IQ-9700	PMD Emul.	IQ-7000	IQ-9100
Insertion loss	X	X	X	X	X				X		X		X	X
Optical return loss					X	X	X						X	X
Polarization dependant loss	X				X				X	X				
Isolation and crosstalk	X		X	X	X									
Polarization mode dispersion					X			X				X		

DWDM Passive Component Testing	IQ-1600	IQ-1100	IQ-2600B	IQ-2600	IQ-2300	IQ-3200	IQ-5240	IQ-5320	IQ-3400B	IQ-5100B	IQ-9700	IQ-9100
Insertion loss vs. wavelength	X	X	X	X	X		X	X			X	X
Optical return loss vs. wavelength	X	X	X	X		X						X
Polarization dependant loss vs. wavelength	X	X		X					X	X		
Isolation and crosstalk vs. wavelength	X	X	X	X	X		X					

IQ Modules and Typical Applications

Typical Applications for IQ Modules

System Testing	IQ-1600	IQ-1200	IQ-1100	IQ-2400	IQ-2300	IQ-2100	IQ-3100	IQ-3300	IQ-5240	IQ-5320	IQ-6100	IQ-9100	IQ-9600
Noise simulation					X						X		
Tx-Rx				X		X	X		X	X		X	X
Bit error rate (BER)	X	X	X	X		X	X	X				X	X

Active Component Testing	IQ-1600	IQ-1500	IQ-1200	IQ-1100	IQ-2600B	IQ-2600	IQ-2400	IQ-3100	IQ-3200	IQ-3300	IQ-5240	IQ-5320	IQ-5310	IQ-5100B	IQ-9700	IQ-6100	IQ-9100	IQ-9600
EDFA	X			X	X	X	X	X		X	X			X	X		X	X
Photodetector		X						X	X						X	X	X	X
Laser diode	X	X	X	X						X	X	X	X				X	X

Other Applications	IQ-1500	IQ-2100	IQ-3100	IQ-5310	IQ-5500	PMD Emul.	IQ-7000	IQ-9100	IQ-9600
Calibration	X		X	X	X				X
Fiber characterization		X			X	X	X	X	

This page is intentionally left blank.

B **Using the IQ-9600 Utility Module**

The IQ-9600 Utility Module provides a secure, standardized way of integrating components such as couplers, isolators, filters, and Bragg gratings into the IQ-200 Optical Test System. Without such a module, these passive optical elements would end up loose on your workbench. This can cause damage or affect their adjustment.

The IQ-9600 Utility Module consists of an empty IQ module casing that fit into your IQ-203 Control Unit or IQ-206 Expansion Unit to house non-electrical elements (no electrical connections are provided).

The IQ-9600 Utility Module comes in either single-slot size (IQ-9601) or double-slot size (IQ-9602). The amount of material supplied with the utility module depends on the configuration, but it usually includes

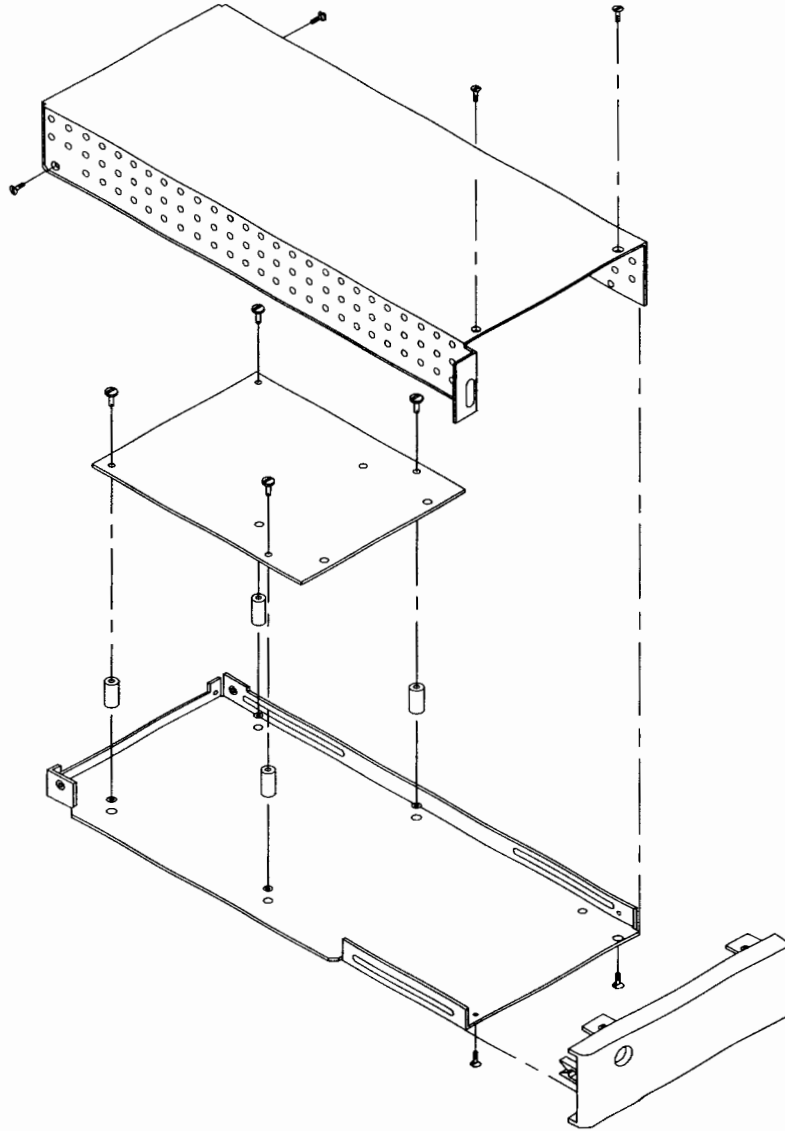
- adhesive tape
- tie wraps
- splice holder
- connectors

Use the exploded views presented in this section as a reference for disassembling and reassembling the utility modules.

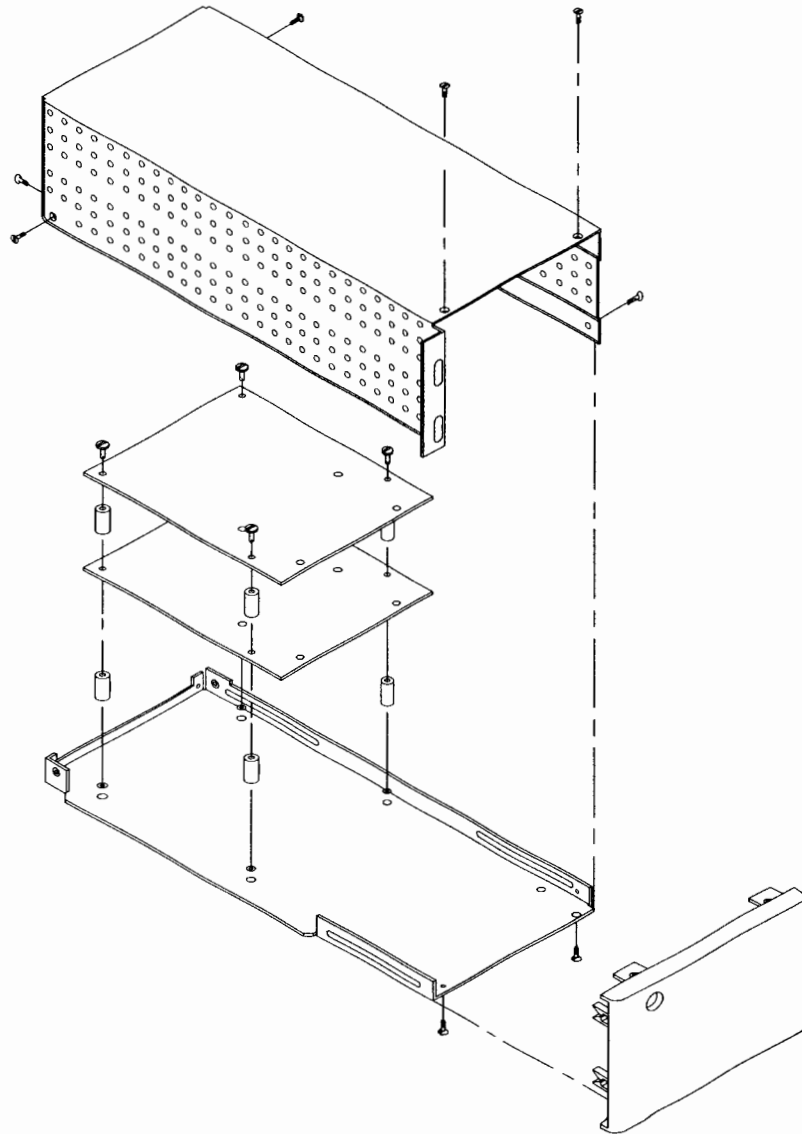
Using the IQ-9600 Utility Module

Exploded View of Single-Slot Utility Module

Exploded View of Single-Slot Utility Module



Exploded View of Double-Slot Utility Module



This page is intentionally left blank.

C Accessing a Remote CD-ROM Drive with the IQ-203


To access an external CD-ROM drive with your IQ-203 Control Unit, you may use either a PC accessed through a network or one connected directly to your IQ-203. Using the network is easier if you have access to it from your IQ-203, but both methods are explained in this section.

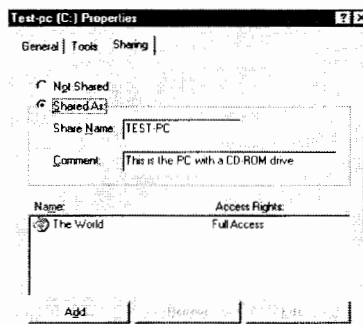
Note: You may also use a portable CD-ROM drive connected to your IQ-203. In this case, refer to the drive documentation for help or instructions.


Sharing the CD-ROM Drive from the PC

The first thing you must do to access files and applications on the CD-ROM from your IQ-203 is to share the CD-ROM drive on the PC, no matter which method you use to connect the PC to your IQ-203.

To share the CD-ROM drive,

1. In Windows Explorer, select the CD-ROM drive letter (usually D:, but it may differ on your PC).
2. Right-click on the drive icon () and select *Sharing...* to open the drive properties dialog box.



3. Select the *Share as* option and give full access to all users. The CD-ROM drive icon () should now contain a hand.

Note: For more information about file sharing, refer to the Microsoft Windows documentation.

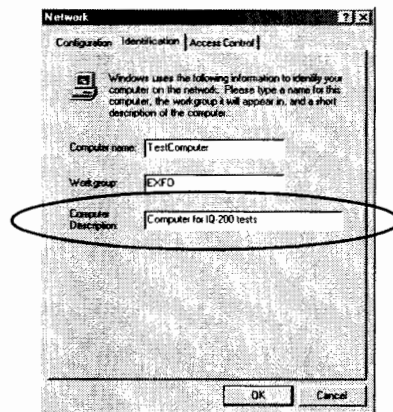
Accessing the Remote CD-ROM from the IQ-203 Through a Network

IMPORTANT

Some computers are protected from remote access by the network security system, even if you shared drives or folders. If you are unable to access a computer via the network, you should contact your network administrator to verify your access rights.

To access the CD-ROM drive through a network,

1. Share the CD-ROM drive on the PC as explained in *Sharing the CD-ROM Drive from the PC* on page 79.
2. Identify the network name of the PC where the CD-ROM drive you want to use is located. You must do this from the PC itself.
 - 2a. Select *Start > Settings > Control Panel* to start the Control Panel.
 - 2b. Double-click on *Network* and select the *Identification* tab.
 - 2c. Note the computer name for later use (circled in the illustration).



Accessing a Remote CD-ROM Drive with the IQ-203

Accessing the Remote CD-ROM from a PC Connected Directly to the IQ-203

3. Before accessing the files, make sure that both the PC and the IQ-203 are turned on (so that the PC is "visible" to the IQ-203).
4. Open the Network Neighborhood by double-clicking on the desktop icon or selecting it in Windows Explorer. The complete list of computers logged on the network should appear gradually.
5. In the list, find the network name of the computer with the CD-ROM drive and double click on it. You will then have access to all the shared drives on this computer. You can use files or programs on the CD-ROM exactly as if it were a local drive.

Accessing the Remote CD-ROM from a PC Connected Directly to the IQ-203

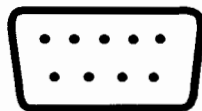
Using the Windows' Direct Cable Connection utility, you can connect the PC and the IQ-203 together using a parallel or serial cable. For this method to work, you need to set-up both systems with the same communication protocols.

Note: *The direct method transfers data slower than a network connection.*

Connecting the PC to the IQ-203

To connect a PC to your IQ-203,

1. Use a standard LapLink Parallel Cable or a LapLink Serial Cable (EXFO's GP-216). Both are illustrated below:



Serial connector

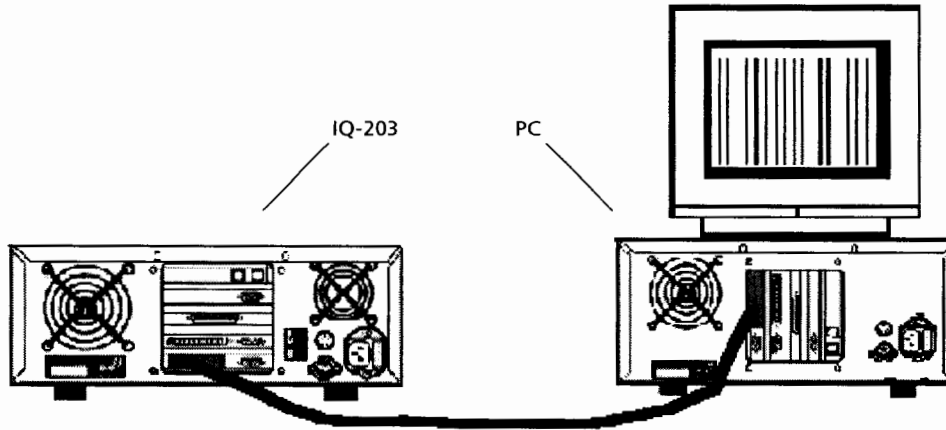


Parallel connector

Accessing a Remote CD-ROM Drive with the IQ-203

Accessing the Remote CD-ROM from a PC Connected Directly to the IQ-203

2. Connect the parallel or serial cable between the IQ-203 and the PC, as shown in the following illustration:



Configuring a Direct Cable Connection Protocol

The Microsoft IPX/SPX-compatible protocol for Windows allows to transfer files from the host computer (the PC with the CD-ROM drive) to the guest computer (your IQ-203).

IMPORTANT

The Microsoft IPX/SPX-compatible protocol must be installed on both systems for the connection to work.

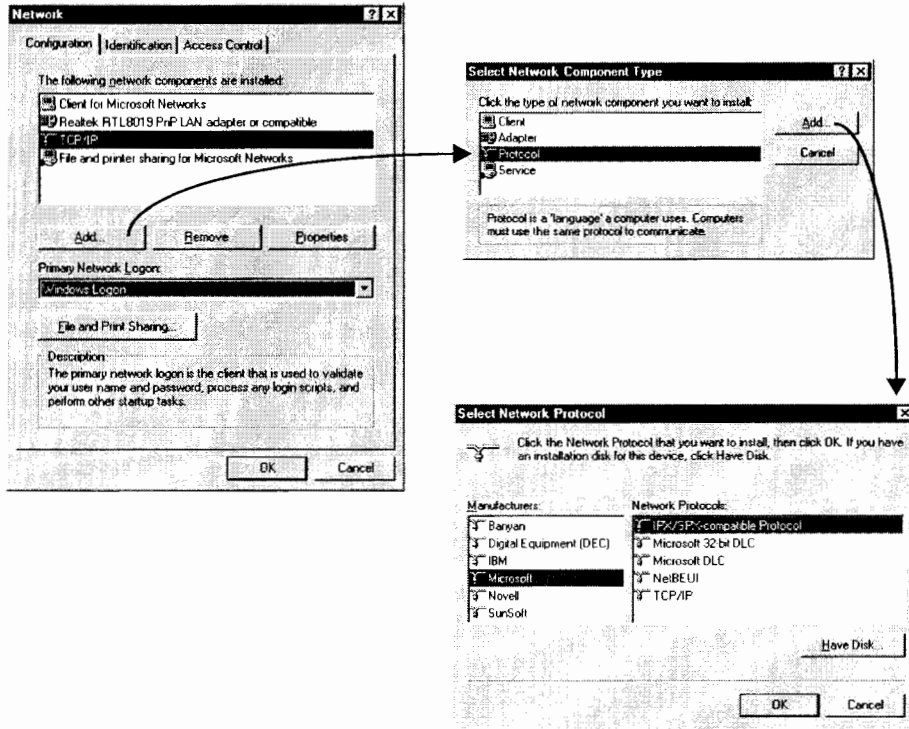
To configure the network protocols,

1. Select *Start > Settings > Control Panel* to start the Control Panel.
2. Double-click on *Network* and select the *Configuration* tab.

Accessing a Remote CD-ROM Drive with the IQ-203

Accessing the Remote CD-ROM from a PC Connected Directly to the IQ-203

3. Check if the IPX/SPX-compatible protocol is available in the upper list. If not, add it as follows:
 - 3a. Click on *Add...*, then double-click on *Protocol*.
 - 3b. In the *Select Network Protocol* dialog box, select *Microsoft* in the *Manufacturer* list, then *IPX/SPX-compatible protocol*.
 - 3c. Click on *OK* to add the new protocol.



4. In the *Network Properties* dialog box, ensure that the *Primary Network Logon* list box is set to *Windows Logon*. This setting determines *who* validates your user name and password, processes login scripts, and performs other tasks at start-up.

Accessing a Remote CD-ROM Drive with the IQ-203

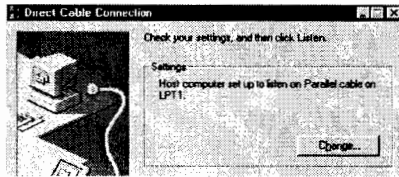
Accessing the Remote CD-ROM from a PC Connected Directly to the IQ-203

Accessing the Remote CD-ROM from the IQ-203

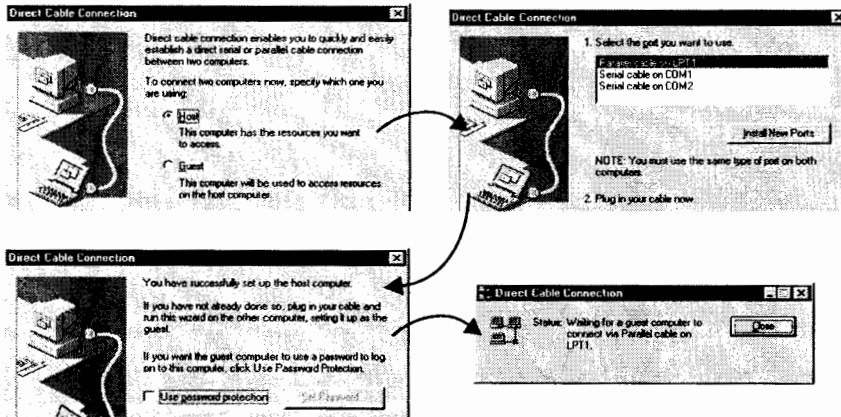
Before accessing the CD-ROM from your IQ-203, you need to configure each system either as a host or a guest. Typically, the host is the PC with the CD-ROM drive and the guest is your IQ-203. You must also specify the communication ports that match the physical connection.

To access the CD-ROM from your IQ-203,

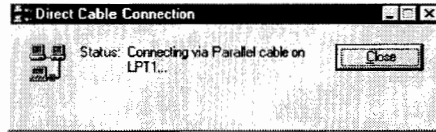
1. Configure the host so that it becomes available to the guest.
 - 1a. Select *Start > Programs > Accessories > Direct Cable Connection*. If this option is not available, refer to the Windows documentation for installation instructions.



- 1b. If it is not already done, set the to *Host computer set up to listen* by clicking on *Change...* and going through the proposed steps. When you are done, the host is ready to accept a connection.



- Configure the guest using the same method as for the host. This time, you must set the Direct Cable Connection utility to *Guest computer set up to connect to host*. When you are done, the guest will try to establish the connection with the host as shown below.



- If everything is set up properly, the guest should ask you for the name of the host computer. For details about how to find the host name, see *Accessing the Remote CD-ROM from the IQ-203 Through a Network* on page 80.

You will then have access to all the shared drives on this computer. You can use files or programs on the CD-ROM exactly as if it was a local drive.

Troubleshooting Direct Cable Connection

The following table provides solutions to common connection problems when using the Direct Cable Connection:

Problem	Solution
The connection fails using the LPTx port.	<ul style="list-style-type: none"> Try changing the port to a COMx port on both systems.
The connection does not work using any of the ports.	<ul style="list-style-type: none"> Swap the host and guest systems. Check the cable pinout.
The connection seems to be established, but I cannot access my files.	Ensure that the CD-ROM drive is shared on the host computer and that the files are not protected from remote access.

If you are still experiencing connection problems, do not hesitate to contact EXFO.

This page is intentionally left blank.

Index

!, at the back of the IQ-203 3, 5

A

AC requirements 11
 applications, typical 72

B

back panel
 of the IQ-203 3
 of the IQ-206 5
 backplane connectors 39
 benchtop installation 13
 binary code 21
 black screen 46
 blank module 75
 brightness buttons 2
 button
 to adjust brightness 2
 to adjust contrast 2
 to power off the IQ-203 2
 to power off the IQ-206 4
 to power on the IQ-203 2
 to power on the IQ-206 4

C

caution
 of personal hazard 9
 of product hazard 9
 CD-ROM drive
 accessing from the IQ-203 80
 sharing on the PC 79
 certification
 information v
 warranty 68

cleaning
 IQ-203 Control Unit 59
 IQ-206 Expansion Unit 59
 configuration files 51
 connecting
 IQ components 17
 IQ-206 Expansion Units to IQ-203 17
 IQ-206 Expansion Units to IQ-206 Expansion
 Card 25
 contrast buttons 2
 control status
 local 56
 lockout 56
 remote 56
 control, remote 8
 cooling the units 14
 CRT screen 45
 customer service 64, 68
 customizing the IQ-200 Optical Test System 45

D

DDE (Dynamic Data Interchange) 8
 DEFRAG command 61
 defragmentation 61
 DIP switches 7, 19, 20, 32
 disk space 57
 display resolution 50
 dragging 42
 drive contents 56
 drivers configuration 31

E

edit boxes 52
 electrical specifications 65
 electrostatic discharge precautions 10
 entering numeric values 44
 environmental specifications 66
 equipment returns 69

Index

ESD.....	10
exclusions, warranty.....	68
expansion card	
illustration of ISA.....	7
illustration of PCI.....	7
ISA.....	32
expansion unit, connection.....	25
external software.....	56

F

flicker.....	62
floppy disk drive.....	2
front panel	
of the IQ-203.....	2
of the IQ-206.....	4
front panel keys	
activating and deactivating.....	47
functions.....	43
location.....	2
relation with software buttons.....	43
front panel lights	
activating and deactivating.....	46
illustration.....	2
front panel mouse	
buttons description.....	42
dragging elements.....	42
location.....	2
function button keypad.....	55
fuse holder	
IQ-203.....	3
IQ-206.....	5
fuse replacement.....	60

G

GPIB communication.....	8
GPIB port.....	3

H

hard disk drive	
LED.....	2
scanning.....	61
space.....	57
help.....	57
hexadecimal address.....	21

I

I/O	
address.....	21, 32
port setting.....	20
IN.....	5
input port.....	5
input/output port address.....	20
input/output, see I/O	
inserting a module.....	39
installing	
IQ-200 Optical Test System.....	13
IQ-200 Software.....	27
IQ-206 Expansion Card.....	19
ISA card.....	19
PCI card.....	19
interface cables, maximum length.....	17
interrupt number setting.....	20
IQ Configuration Tool.....	31, 32
IQ modules	
list of.....	71
typical applications.....	72
IQ Settings window.....	31, 45–51
IQ software conventions	
edit boxes.....	52
list boxes.....	52
radio buttons.....	52
software buttons.....	52
IQ-200 drivers configuration.....	31
IQ-200 Optical Test System	
cables.....	17
capacity.....	1
components.....	1
connecting.....	17

customization	45	installation	19
description	1, 13	IRQ number setting	20
installation	13	maintenance	59
power on	35, 37	models available	19
product line	1	power consumption	19
turning off	58	requirements	19
IQ-200 Software		technical specifications	65
About window	57	troubleshooting	63
installation description	27	IQ-206 Expansion Unit	
installation procedure	27	back panel	5
main window description	41	cleaning	59
uninstallation	33	description	4
version	57	front panel	4
IQ-203 Control Unit		fuse holder	5
back panel	3	maintenance	59
brightness buttons	2	nameplate	5
cleaning	59	ON/OFF button	4
computer configuration	1	power on	36, 38
contrast buttons	2	sequential position display	4
description	1	technical specifications	65
floppy disk drive	2	troubleshooting	62
front panel	2	turning off	58
front panel mouse	2	IQ-9600 Utility Module	75–77
getting started	35	IRQ	
keys	2	for ISA card	32
LED	2	number setting	20, 22
memory	57	ISA card	32
nameplate	3	diagram	7
ON/OFF button	2	installation	19
power on	36		
technical specifications	65	K	
troubleshooting	62	keypad window	44
turning off	58	keys, activating and deactivating	47
IQ-206 Expansion Card			
description	6	L	
DIP switches	7, 20	LCD screen	45
DIP switches configuration	20	LED, of hard disk drive	2
getting started	37	liability	68
hardware settings	20	lights, turning off	46
host computer configuration	19	list boxes	52
I/O port setting	20		
illustration (ISA and PCI)	6		

local 56
 location 2
 lockout 56

M

maintenance
 defragmenting files 61
 IQ-203 Control Unit 59
 IQ-206 Expansion Unit 59
 replacing fuses 60
mechanical specifications 65
memory available 57
module
 insertion 39
 list of 71
 maximum number of 13
 position 41
 removal 40
 renaming 49
 starting and using 52
module application
 exiting 53
 starting 53
module monitor window
 arranging 55
 closing 55
 description 54
 opening the 54
mouse
 location 2
 tracking speed 48

N

numeric keypad description 44
numeric values 44

O

Object Linking and Embedding (OLE) 8
ON/OFF button
 of the IQ-203 2
 of the IQ-206 4
online help 57
OUT 5
output port 5

P

PCI card
 adding in Microsoft Windows 23
 diagram 7
 installation 19
plugs 11
positioning the units 14
power
 cable supplied 11
 plug 11
 requirements 11
power consumption, IQ-206 Expansion Card 19
powering on
 the IQ-200 Optical Test System 35, 37
 the IQ-203 Control Unit 36
 the IQ-206 Expansion Unit 36, 38
precautions 9
printer
 configuration 48
 selection 48

R

rack-mount
 kit 14
 setup 14
radio buttons 52
remote CD-ROM drive 79

